

Adaptive Teaching Programme

INVICTUS
INSTITUTE

'Making excellence a habit'

Eve is the Director of Invictus Institute at Invictus Education Trust, where she drives school improvement by strategically overseeing subject directors and leading professional development across the Trust.

A recognised expert in teaching and learning, Eve has a proven track record of success in pedagogy and classroom practice, positively influencing the outcomes of many young people.

Course content:

The Adaptive Teaching Programme is designed to help you introduce a sustainable model of teacher development around adaptive teaching in your school.

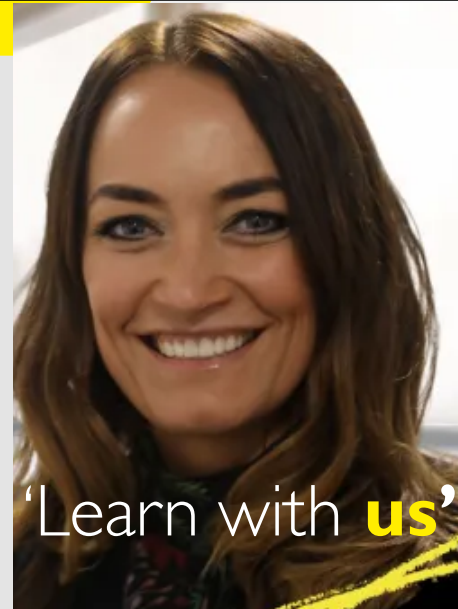
It helps you to better understand adaptive teaching practices, with a focus on anticipating and responding to barriers to learning. It also supports you to train and develop your teaching staff to apply these approaches at a whole-class level.

Some of the core components of adaptive teaching practices explored on this programme include:

- How to anticipate barriers to learning.
- How to use formative assessment to detect barriers and check for understanding.
- How to respond and adapt in lessons through feedback, scaffolding and flexible grouping.
- How to monitor whether the adaptation is working or needs adjustment.

You will also learn:

- How to design and deliver effective, evidence-informed professional development on adaptive teaching.
- The key considerations when looking to monitor and evaluate the impact of your training.



'Learn with **us**'

Location:

Invictus Headquarters,
Kinver High School,
Enville Road, Kinver,
South Staffs,
England
DY7 6AA

[Book Now](#)

Contact Us



[01384 686408](tel:01384686408)



institute@invictus.education