

INVICTUS

Education Trust

Safeguarding and Child Protection Policy



INVICTUS

Education Trust

Safeguarding and Child Protection Policy

Document Control and Version Control

DOCUMENT CONTROL	
POLICY TITLE:	Safeguarding and Child Protection
POLICY AUTHOR:	Antoinette Jackson – IET Head of Safeguarding, Behaviour and Attendance
VERSION NUMBER:	1.0
DATE APPROVED:	11 th September 2023
DATE EFFECTIVE:	1 st September 2023
DATE DUE FOR REVIEW:	31/08/24
POLICY STATUS:	Statutory Policy
POLICY TYPE:	Overarching Trust Safeguarding Policy
REQUIRED TO PUBLISH:	Yes
TRUST LEAD:	Antoinette Jackson – IET Head of Safeguarding, Behaviour and Attendance
APPROVAL LEVEL (TEMPLATE):	Trust Board
APPROVAL LEVEL (BESPOKE):	Executive Approval

VERSION CONTROL			
VERSION	AUTHOR	DATE	CHANGES
1.0	A. Jackson	01/09/23	Annual cycle re-write to give effect to changes in statutory guidance

--	--	--	--

Invictus Education Trust Safeguarding Statement of Intent

Children and young people have a fundamental right to be protected from harm. They have a right to expect schools to provide a safe and secure environment. It is a guiding principle of the law and child protection procedures that the protection and welfare of a child must always be the first priority. Failure to provide an effective response can have serious consequences for the child.

We provide a safe, nurturing and welcoming environment for all of our children, regardless of age, ability, culture race, language, religion, gender identity or sexual identity. Kindness and care is at the heart of everyday practice.

At Crestwood we are committed to safeguarding children and young people and there is a fundamental expectation that everyone who works or volunteers with us shares this commitment. All staff, governors and volunteers must fulfil their role in keeping children safe and align to our whole school safeguarding approach. All staff receive an appropriate level of safeguarding training which is elevated and aligned to responsibility. Safeguarding training and updates is a regular feature within whole staff briefings where we leave no room for complacency and continually refresh staff with safeguarding guidance.

A child-centred approach is essential where we have clear understanding of the needs and views of children. We recognise the importance of providing a safe, warm and nurturing environment, enabling children to talk openly about anything that worries them and to feel confident that they will be listened to.

We have robust systems and procedures in place including curriculum time, where we educate our children to safeguard themselves in and out of school hours. They have access to helpline support and contact information which is regularly revisited throughout the year.

We update this policy at least annually to reflect changes to law, guidance and best practice.

We work with our local safeguarding partners to promote the welfare of children and protect them from harm. This includes providing a co-ordinated offer of early help when additional needs of children are identified and contributing to inter-agency plans which provide additional support to the child. All of our staff have an equal responsibility to act on any suspicion or disclosure that may indicate that a child is at risk of harm. Any children, young people or staff involved in child protection or safeguarding issues will receive appropriate support.

Our strong safeguarding culture ensures that we treat all pupils with respect and involve them in decisions that affect them. We encourage positive, respectful and safe behaviour among pupils and we set a good example by conducting ourselves appropriately.

All of our staff have clear understanding of how to respond to disclosures, and will reassure children and young people that their concerns will be taken seriously in a supported and safe space.

This policy should be read in conjunction with Keeping Children Safe in Education (September 2023), which is statutory guidance to be read and followed by schools and colleges, and alongside Working together to safeguard children (March 2018), a guide to inter-agency working to safeguard and promote the welfare of children.

Furthermore, school leaders will follow the procedures set out by the local safeguarding partnership

Contents

Contents

Important contacts

1. Aims
2. Legislation and statutory guidance
3. Ethos and culture
4. Definitions
5. Equality statement
6. Roles and responsibilities
7. Recognising abuse and taking action
8. Online safety and the use of mobile technology
9. Working with parents and carers
10. Pupils with special educational needs, disabilities or health issues
11. Pupils with a social worker
12. Looked-after and previously looked-after children
13. Complaints and concerns about school safeguarding policies
14. Record-keeping
15. Training
16. Monitoring arrangements
17. Links with other policies
18. Site Security

Appendix 1: Types of abuse

Appendix 2: Safer recruitment and DBS checks – policy and procedures

Appendix 3: Allegations of abuse made

Appendix 4: Specific safeguarding issues – Keeping Children Safe in Education 2023

Important Contacts

Name	Role	Date and level of training	Email address
Antoinette Jackson	Invictus Education Trust Safeguarding, Behaviour and Attendance Lead	Safeguarding level 3 January 2023	ajackson@invictus.education
Yvonne Nelson-Brown Sukhchandan Kaur	Local authority designated officer (LADO)	01384 813066 01384-813110	allegations@dudley.gov.uk
Jane Dickens (Education lead)	Dudley people safeguarding partnership	01384 813777	https://dudleysafeguarding.org.uk/children/Jane.Dickens@dudley.gov.uk
Mark Wilson (Education lead)	Prevent helpline	0121251 0241	ctu_gateway@west-midlands.pnn.police.uk

1. Aims

The purpose of the Trust overarching safeguarding policy:

- To embed a safeguarding culture across our schools where all stakeholders understand that safeguarding is everyone's responsibility and have a good understanding of systems, processes and contextual safeguarding
- Appropriate action is taken in a timely manner to safeguard and promote children's welfare
- All staff are aware of their statutory responsibilities with respect to safeguarding
- Staff are properly trained in recognising and reporting safeguarding issues
- Committed to developing a robust safeguarding culture of vigilance and challenge
- Build resilience by raising awareness of safeguarding and child protection issues, and equipping children with the language and skills to keep themselves safe
- Establish a safe environment in which children can learn and develop within an ethos of openness and where children are taught to treat each other with respect, to feel safe, to have a voice and know that they will be listened to
- Support vulnerable pupils who have been abused, have witnessed violence towards others or may be vulnerable to abuse
- Prevent unsuitable people from working with children by ensuring we practice safe recruitment in checking the suitability of all school staff, supply staff and volunteers to work with our children and maintain an active, ongoing vigilance in line with the safeguarding culture
- To follow the procedures set out by Dudley Safeguarding Children's Board, Working Together to Safeguard Children 2018 and Keeping children safe in education 2023 by knowing and understanding that:
- Safeguarding and promoting the welfare of children is everyone's responsibility and the voice of the child is evident
- By establishing a safe environment, we enable our children to learn and develop within an ethos of openness
- The importance of providing children with a balanced curriculum including PHSE, healthy relationship education, online safety, sexting, child-on-child abuse as well as 'abuse outside the home' county lines, contextualised safeguarding issues, and Child Criminal Exploitation (incl CSE). Also supporting this with online activities, enabling children to enhance their safeguarding skills and knowledge whilst understanding the risks
- Undertaking the role to enable children and young people at our school to have best possible outcomes

2. Legal Framework and Guidance

This policy has due regard to statutory legislation and relevant guidance, including, but not limited to:

- Section 175 of the Education Act (2002)
- The School Staffing (England) Regulations 2009 – Single central record requirements
- The Children Act 1989 (and 2004 amendment), framework for the care and protection of children
- Dudley Safeguarding Partners - <https://dudleysafeguarding.org.uk/>
- Keeping Children Safe in Education (2023)
- Working Together to Safeguard Children (2018)
- What to Do if You Are Worried About a Child (2015)
- Child on child abuse policy
- Information Sharing: Advice for Practitioners (2018)
- Guidance for Safer Working Practice for Adults who Work with Children and Young People in Education Settings (2019)
- The Human Rights Act (1998)
- The Equality Act (2010) and Public Sector Equality Duty
- The Data Protection Act (2018)
- Serious Crime Act (2015)
- Teaching Online Safety in School (2018)
- UKCIS Education for a Connected World (2018)
- NSPCC guidance 'When to call the Police'
- Prevent Duty (2015)
- Sexual Offences Act 2003
- Preventing Youth Violence and Gang Involvement (2013)
- Criminal Exploitation of Children and Vulnerable Adults: County Lines Guidance (2018)
- Section 175 of the Education Act 2002, which places a duty on schools and local authorities to safeguard and promote the welfare of pupils
- The School Staffing (England) Regulations 2009, which set out what must be recorded on the single central record and the requirement for at least 1 person conducting an interview to be trained in safer recruitment techniques
- Part 3 of the schedule to the Education (Independent School Standards) Regulations 2014, which places a duty on academies and independent schools to safeguard and promote the welfare of pupils at the school
- and welfare in the [statutory framework for the Early Years Foundation Stage](#)
- This policy also complies with our funding agreement and articles

3. Definitions

Safeguarding and promoting the welfare of children means:

- Protecting children from maltreatment
- Preventing impairment of children's mental and physical health or development
- Ensuring that children grow up in circumstances consistent with the provision of safe and effective care
- Taking action to enable all children to have the best outcomes

Child protection is part of this definition and refers to activities undertaken to prevent children suffering, or being likely to suffer, significant harm.

Abuse is a form of maltreatment of a child, and may involve inflicting harm or failing to act to prevent harm. Appendix 1 explains the different types of abuse.

Neglect is a form of abuse and is the persistent failure to meet a child's basic physical and/or psychological needs, likely to result in the serious impairment of the child's health or development. Appendix 1 defines neglect in more detail.

Sharing of nudes and semi-nudes (also known as sexting or youth-produced sexual imagery) is where children share nude or semi-nude images, videos or live streams.

Children includes everyone under the age of 18.

The following 3 **safeguarding partners** are identified in Keeping Children Safe in Education (and defined in the Children Act 2004, as amended by chapter 2 of the Children and Social Work Act 2017). They will make arrangements to work together to safeguard and promote the welfare of local children, including identifying and responding to their needs:

- The local authority (LA)
- Integrated care boards (previously known as clinical commissioning groups) for an area within the LA
- The chief officer of police for a police area in the LA area
- **Victim** is a widely understood and recognised term, but we understand that not everyone who has been subjected to abuse considers themselves a victim, or would want to be described that way. When managing an incident, we will be prepared to use any term that the child involved feels most comfortable with.
- **Alleged perpetrator(s)** and **perpetrator(s)** are widely used and recognised terms. However, we will think carefully about what terminology we use (especially in front of children) as, in some cases, abusive behaviour can be harmful to the perpetrator too. We will decide what's appropriate and which terms to use on a case-by-case basis.

4. Equality Statement

Some children have an increased risk of abuse, both online and offline, and additional barriers can exist for some children with respect to recognising or disclosing it. We are committed to anti-discriminatory practice and recognise children's diverse circumstances. We ensure that all children have the same protection, regardless of any barriers they may face.

We give special consideration to children who:

- Have special educational needs and/or disabilities (SEND) or health conditions (see section 10)
- Are young carers
- May experience discrimination due to their race, ethnicity, religion, gender identification or sexuality
- Have English as an additional language
- Are known to be living in difficult situations – for example, temporary accommodation or where there are issues such as substance abuse or domestic violence
- Are at risk of FGM, sexual exploitation, forced marriage, or radicalisation
- Are asylum seekers
- Are at risk due to either their own or a family member's mental health needs
- Are looked after or previously looked after (see section 12)
- Are missing or absent from education for prolonged periods and/or repeat occasions
- Whose parent/carer has expressed an intention to remove them from school to be home educated
- Look after children
- Children on child protection or child in need registers
- Children who we recognise as having a wider vulnerability

5. Roles and Responsibilities

Safeguarding and child protection is **everyone's** responsibility. This policy applies to all staff, volunteers and governors in the school and is consistent with the procedures of the 3 safeguarding partners. Our policy and procedures also apply to extended school and off-site activities.

The school plays a crucial role in preventative education. This is in the context of a whole-school approach to preparing pupils for life in modern Britain, and a culture of zero tolerance of sexism, misogyny/misandry, homophobia, biphobia, transphobia and sexual violence/harassment. This will be underpinned by our:

- Behaviour policy
- Pastoral support system
- Planned programme of relationships, sex and health education (RSHE), which is inclusive and delivered regularly, tackling issues such as:
 - Healthy and respectful relationships
 - Boundaries and consent
 - Stereotyping, prejudice and equality
 - Body confidence and self-esteem
 - How to recognise an abusive relationship (including coercive and controlling behaviour)
 - The concepts of, and laws relating to, sexual consent, sexual exploitation, abuse, grooming, coercion, harassment, rape, domestic abuse, so-called honour-based violence such as forced marriage and FGM and how to access support
- What constitutes sexual harassment and sexual violence and why they're always unacceptable

5.1 All Staff

Staff who work directly with children are expected to read at least part 1 of Keeping Children Safe in Education (KCSIE).

Staff who work directly with children are also expected to read annex B of KCSIE (about specific safeguarding issues). Read and understand part 1 and annex B of the Department for Education's statutory safeguarding guidance, [Keeping Children Safe in Education](#), and review this guidance at least annually

- Sign a declaration at the beginning of each academic year to say that they have reviewed the guidance
- All staff receive appropriate safeguarding training (including online safety) at induction and this training is regularly updated. In addition, all staff should receive safeguarding and child protection (including online safety) updates as required, and at least annually, to continue to provide our staff with relevant skills and knowledge to safeguard children effectively. Safeguarding knowledge checks are carried out with staff to ensure understanding from training.
- All staff reinforce the importance of online safety when communicating with parents and carers. This includes making parents and carers aware of what we ask children to do online (e.g. sites they need to visit or who they'll be interacting with online)
- All staff know who the DSL/DDSL and the wider safeguarding team are
- Provide a safe space for pupils who are LGBTQ+ to speak out and share their concerns
- All staff understand our systems which support safeguarding, including this child protection and safeguarding policy, the staff code of conduct policy, the role and identity of the designated safeguarding lead (DSL), deputies (DDSL) and assistants (ADSL), the behaviour policy, the online safety policy: which includes the expectations, applicable roles and responsibilities in relation to filtering and monitoring, and the safeguarding response to children who go missing from education .
- All staff understand Indicators of abuse and neglect and understand that children can be at risk of harm inside and outside of the school/college, inside and outside of home and online. Staff are confident in exercising professional curiosity and understand that knowing what to look for is vital for the early identification of abuse and neglect to identify cases of children who may be in need of our help or protection. They are aware that abuse, neglect, and safeguarding issues are rarely standalone events that can be covered by one definition or label. In most cases, multiple issues will overlap with one another.
- All staff, but especially the DSL/DDSL consider whether children are at risk of abuse or exploitation in situations outside their families. Extra-familial harms take a variety of different forms and children can be vulnerable to multiple harms including (but not limited to) sexual abuse (including harassment and exploitation), domestic abuse in their own intimate relationships (teenage relationship abuse), criminal exploitation, serious youth violence, county lines, and radicalisation.
- All staff are aware that technology is a significant component in many safeguarding and wellbeing issues and that children are at risk of abuse and other risks online as well as face to face. They know that in many cases abuse and other risks will take place concurrently both online and offline. Children can also abuse other children online, this can take the form of abusive, harassing, and misogynistic/misandrist messages, the non-consensual sharing of indecent images, especially around chat groups, and the sharing of abusive images and pornography, to those who do not want to receive such content.
- All staff understand the early help process and their role in it, including identifying emerging problems, liaising with the DSL, and sharing information with other professionals to support early identification and assessment

- The process for making referrals to local authority children’s social care and for statutory assessments that may follow a referral, including the role they might be expected to play
- What to do if they identify a safeguarding issue or a child tells them they are being abused or neglected, including specific issues such as FGM, and how to maintain an appropriate level of confidentiality while liaising with relevant professionals
- Know what to do if a child tells them they are being abused, exploited, or neglected. Staff know how to maintain an appropriate level of confidentiality by only involving those who need to be involved, such as the DSL/DDSL and local authority children’s social care. Staff never promise a child that they will not tell anyone about a report of abuse, as this may ultimately not be in the best interests of the child All staff know how to reassure victims that they are being taken seriously and that they will be supported and kept safe. A victim should never be given the impression that they are creating a problem by reporting any form of abuse and/or neglect. Nor should a victim ever be made to feel ashamed for making a report.
- The signs of different types of abuse and neglect, as well as specific safeguarding issues, such as child-on-child abuse, child sexual exploitation (CSE), child criminal exploitation (CCE), indicators of being at risk from or involved with serious violent crime, FGM, radicalisation and serious violence (including that linked to county lines)
- The importance of reassuring victims that they are being taken seriously and that they will be supported and kept safe
- The fact that children can be at risk of harm inside and outside of their home, at school and online
- The fact that children who are (or who are perceived to be) lesbian, gay, bi or trans (LGBTQ+) can be targeted by other children
- All staff are aware of how to make a referral to children’s social care, especially section 17 (children in need) and section 47 (a child suffering, or likely to suffer, significant harm) that may follow a referral, along with their potential role in such assessments.
- All staff understand their responsibility to report concerns about the behaviour of any adult in our school and know that they will be listened to and taken seriously. All staff understand their responsibility to escalate concerns and ‘press for reconsideration’ if they believe a child’s needs remain unmet or if the child is failing to thrive and in need or if the child is at risk of harm. In all cases, if our staff are unsure, they know that they should always speak to the DSL/DDSL.
- All staff know what to look for to identify children who need help or protection
- Section 15 and Appendix 4 of this policy outline in more detail how staff are supported to do this.

5.2 The Designated Safeguarding Lead (DSL) And Deputy Designated Safeguarding Lead (DDSL)

- For full details of the DSL/DDSL roles and responsibilities please refer to Part 2 & Annex C of Keeping Children Safe in Education 2022.
- The DSL is a member of the senior leadership team and the DDSL is fully trained to support and step into the DSL role during absence. The DSL takes lead responsibility for child protection and wider safeguarding in the school. This includes online safety, and understanding our filtering and monitoring processes on school devices and school networks to keep pupils safe online.
- During term time, the DSL will be available during school hours for staff to discuss any safeguarding concerns.
- Our DSL/DDSL(s) have received the appropriate safeguarding training to provide them with an understanding of their role and the knowledge and skills to carry it out. Our DDSL(s) are trained to the same level as the DSL. Training received also supports their knowledge of the processes, procedures, and responsibilities of other agencies, particularly children’s social

care in line with Working Together to Safeguard Children 2018. This training is updated at least every 2 years and in addition to this they regularly (at least annually) refresh and update their knowledge and skills. The DSL is given additional time, funding, training, resources, and support needed to carry out the role effectively.

- The DSL takes the lead responsibility for safeguarding and child protection (including online safety), and this is explicit in their job description. During term time, the DSL/DDSL is available (during school hours) for staff in the school to discuss any safeguarding concerns. The DSL can delegate activities to the DDSL(s); however, the ultimate responsibility remains with them, and this lead responsibility is not delegated. In the absence of the DSL the DDSL(s) will take a lead on safeguarding with clear direction from the Senior Leadership Team.
- The DSL acts as a source of support, advice, and expertise for staff. Risk assessments/safety plans will be completed as required and should, where appropriate, involve other agencies, these are reviewed regularly and shared appropriately.
- The DSL maintains robust systems to monitor and record training of all staff and update and refresher time scales are evident within the training record. Training is delivered in-line with Dudley Safeguarding Partnership and KCSIE 2023. This will include bulletins, briefings, and inset day training as well as external events attended. Staff training programme and updates are set throughout the school year.
- The DSL ensures that all staff and regular visitors have appropriate safeguarding training to equip them for their role in school.
- The DSL ensures systems are in place to induct new staff/governors are robust and monitored and any non-compliance shared with Senior Leadership Team/Governing body.
- The DSL monitors the electronic case management system CPOMS to record concerns about children, ensuring that the quality of information is accurate, proportionate, timely and assessment/referrals are made appropriately. The recording and storing of information are kept in-line with the Data Protection Act 2018 and General Data Protection. The safeguarding and child protection records are kept in a secure location, away from academic records and there is a clear recording process of transfer, in or out, which if paper file transfer, using the transfer of records form which is signed by the sending and receiving settings and a copy of this form kept by both.
- When a parent chooses to remove their child/ren from school to receive EHE (Elective Home Education), the DSL will pass on any safeguarding concerns and the safeguarding file if there is one, to the EHE Team within DSPP and inform other professionals who may be involved with that child.
- Supervision sessions are scheduled weekly with the trust safeguarding lead to support DSL's and their wider safeguarding team.
- Safeguarding staff meet frequently but two weekly as a minimum to ensure and support staff wellbeing.
- The DSL/DDSL will refer cases of suspected abuse to the local authority children's social care, as required, and support other staff to make these referrals.
- We understand the importance of attending case conferences and core group meetings as well as Child in Need meetings
- DSL will liaise with all staff (e.g., pastoral staff, school nurses, SEN staff and Mental Health Leads) on matters of safety and safeguarding and when deciding whether to make a referral by liaising with relevant agencies.
- The DSL/DDSL will represent school at child protection conferences and core group meetings and will be the expert within our setting to support staff in liaising with other agencies, making assessments and any referrals.
- Any staff member may be required to be part of strategy discussions with other interagency meetings and contribute to the assessment of child/ren.

- The DSL/DDSL will ensure that children's social care are notified if a child with a child protection plan is absent.
- The DSL/DDSL helps to promote educational outcomes by sharing appropriate information about the welfare, safeguarding and child protection issues that children (including children with or who have previously had a Social Worker) are experiencing, or have experienced, with teachers and school leadership staff. Their role could include ensuring that the schools and their staff, know who these children are, understand their academic progress and attainment and maintain a culture of high aspirations for this cohort; supporting teaching staff to identify the challenges that children in this group might face and the additional academic support and adjustments that they could make to best support these children.
- The DSL has a good understanding of the community the school serves, the risks and its resilience. Through Operation Encompass we look to support students and parents with incidents of Domestic Abuse and Anti-Social behaviour. Liaison with local police and safeguarding forums support contextual safeguarding.
- Refer suspected cases, as appropriate, to the relevant body (local authority children's social care, Channel programme, Disclosure and Barring Service, and/or police), and support staff who make such referrals directly
- Have a good understanding of harmful sexual behaviour
- Have a good understanding of the filtering and monitoring systems and processes in place at their schools.

The DSL can also be contacted out of school hours if necessary by email

When the DSL is absent, the DDSL will act as cover and can be contacted by email:

If the DSL and deputy are not available, the Headteacher can be contacted

The DSL will also:

- Keep the Headteacher informed of any issues
- Liaise with local authority case managers and designated officers for child protection concerns as appropriate
- Discuss the local response to sexual violence and sexual harassment with police and local authority children's social care colleagues to prepare the school's policies
- Be confident that they know what local specialist support is available to support all children involved (including victims and alleged perpetrators) in sexual violence and sexual harassment, and be confident as to how to access this support
- Be aware that children must have an 'appropriate adult' to support and help them in the case of a police investigation or search

The full responsibilities of the DSL and deputy are set out in their job description

5.3 The Governing Board

The Governing Board will:

- Facilitate a whole-school approach to safeguarding, ensuring that safeguarding and child protection are at the forefront of, and underpin, all relevant aspects of process and policy development
- Evaluate and approve this policy at each review, ensuring it complies with the law, and hold the Headteacher to account for its implementation
- Be aware of its obligations under the Human Rights Act 1998, the Equality Act 2010 (including the Public Sector Equality Duty), and our school's local multi-agency safeguarding arrangements

- Appoint a senior board level link governor to monitor the effectiveness of this policy in conjunction with the full governing board. This is always a different person from the DSL
- Ensure all staff undergo safeguarding and child protection training, including online safety, and that such training is regularly updated and is in line with advice from the safeguarding partners
- Ensure that the school has appropriate filtering and monitoring systems in place, and review their effectiveness. This includes:
 - Making sure that the leadership team and staff are aware of the provisions in place, and that they understand their expectations, roles and responsibilities around filtering and monitoring as part of safeguarding training
 - Reviewing the [DfE's filtering and monitoring standards](#), and discussing with IT staff and service providers what needs to be done to support the school in meeting these standards
- Make sure:
 - The DSL has the appropriate status and authority to carry out their job, including additional time, funding, training, resources and support
 - Online safety is a running and interrelated theme within the whole-school approach to safeguarding and related policies
 - The DSL has lead authority for safeguarding, including online safety and understanding the filtering and monitoring systems and processes in place
 - The school has procedures to manage any safeguarding concerns (no matter how small) or allegations that do not meet the harm threshold (low-level concerns) about staff members (including supply staff, volunteers and contractors). Appendix 3 of this policy covers this procedure
 - That this policy reflects that children with SEND, or certain medical or physical health conditions, can face additional barriers to any abuse or neglect being recognised
- Where another body is providing services or activities (regardless of whether or not the children who attend these services/activities are children on the school roll):
 - Seek assurance that the other body has appropriate safeguarding and child protection policies/procedures in place, and inspect them if needed
 - Make sure there are arrangements for the body to liaise with the school about safeguarding arrangements, where appropriate
 - Make sure that safeguarding requirements are a condition of using the school premises, and that any agreement to use the premises would be terminated if the other body fails to comply
- The Chair of Governors will act as the 'case manager' in the event that an allegation of abuse is made against the Headteacher, where appropriate (see Appendix 3).
- All governors will read Keeping Children Safe in Education in its entirety.
- Section 15 of this policy has information on how governors are supported to fulfil their role.

5.4 The Headteachers

- The Headteacher is responsible for the implementation of the safeguarding policy including:
- Ensuring that staff (including temporary staff) and volunteers:
 - Are informed of our systems which support safeguarding, including this policy, as part of their induction
 - Understand and follow the procedures included in this policy, particularly those concerning referrals of cases of suspected abuse and neglect
- Communicating this policy to parents/carers when their child joins the school and via the school website
- Ensuring that the DSL has appropriate time, funding, training and resources, and that there is always adequate cover if the DSL is absent

- Acting as the ‘case manager’ in the event of an allegation of abuse made against another member of staff or volunteer, where appropriate (see Appendix 3)
- Making decisions regarding all low-level concerns, though they may wish to collaborate with the DSL on this
- Overseeing the safe use of technology, mobile phones and cameras in the setting

5.5 Virtual School Heads

Virtual school heads have a non-statutory responsibility for the strategic oversight of the educational attendance, attainment and progress of pupils with a social worker.

They should also identify and engage with key professionals, e.g. DSLs, special educational needs co-ordinators (SENCOs), social workers, mental health leads and others.

6. Confidentiality

Schools need to collect personal information to enable us to educate our students, and to carry out our everyday business functions/activities. Such data is collected from students, parents/carers, employees, customers, suppliers etc.

The data includes (but is not limited to), name, address, email address, data of birth, IP address, identification numbers, private and confidential information, sensitive information such as medical and bank/credit card details etc. In addition, we may be required to collect and use certain types of personal information to comply with the requirements of the law and/or regulations. However, we are committed to processing all personal information in accordance with the General Data Protection Regulation (GDPR), UK Data Protection Laws and any other relevant the data protection laws and codes of conduct (herein collectively referred to as “the data protection laws”).

The school has developed policies, (www.crestwoodschool.co.uk/policies-statements-guidance) procedures, controls and measures to ensure maximum and continued compliance with Data Protection laws and principles, including staff training, procedure documents, audit measures and assessments. Ensuring and maintaining the security and confidentiality of personal and/or special category data is one of our top priorities and we are proud to operate a 'Privacy by Design' approach, assessing changes and their impact from the start and designing systems and processes to protect personal information at the core of our business.

Staff will understand:

- Child protection issues warrant a high level of confidentiality, not only out of respect for the pupil and staff involved but also to ensure that anything being released into the public domain does not compromise evidence.
- Timely information sharing is essential to effective safeguarding
- Fears about sharing information must not be allowed to stand in the way of the need to promote the welfare, and protect the safety, of children
- The Data Protection Act (DPA) 2018 and UK GDPR do not prevent, or limit, the sharing of information for the purposes of keeping children safe
- If staff need to share ‘special category personal data’, the DPA 2018 contains ‘safeguarding of children and individuals at risk’ as a processing condition that allows practitioners to share information without consent if: it is not possible to gain consent; it cannot be reasonably expected that a practitioner gains consent; or if to gain consent would place a child at risk
- Staff should never promise a child that they will not tell anyone about a report of abuse, as this may not be in the child’s best interests
- If a victim asks the school not to tell anyone about the sexual violence or sexual harassment:

- There's no definitive answer, because even if a victim doesn't consent to sharing information, staff may still lawfully share it if there's another legal basis under the UK GDPR that applies
- The DSL will balance the victim's wishes against their duty to protect the victim and other children
- The DSL will consider that:
- Parents or carers should normally be informed (unless this would put the victim at greater risk)
- The basic safeguarding principle is: if a child is at risk of harm, is in immediate danger, or has been harmed, a referral should be made to local authority children's social care
- Rape, assault by penetration and sexual assault are crimes. Where a report of rape, assault by penetration or sexual assault is made, this should be referred to the police. While the age of criminal responsibility is 10, if the alleged perpetrator is under 10, the starting principle of referring to the police remains

Regarding anonymity, all staff will:

- Be aware of anonymity, witness support and the criminal process in general where an allegation of sexual violence or sexual harassment is progressing through the criminal justice system
- Do all they reasonably can to protect the anonymity of any children involved in any report of sexual violence or sexual harassment, for example, carefully considering which staff should know about the report, and any support for children involved
- Consider the potential impact of social media in facilitating the spreading of rumours and exposing victims' identities
- Refer to the government's information sharing practitioners (7 golden rules) for sharing information, and will support staff who have to make decisions about sharing information.

The government's [information sharing advice for safeguarding practitioners](https://www.gov.uk/government/publications/safeguarding-practitioners-information-sharing-advice) includes 7 'golden rules' for sharing information, and will support staff who have to make decisions about sharing information <https://www.gov.uk/government/publications/safeguarding-practitioners-information-sharing-advice>

Confidentiality is also addressed in this policy with respect to record-keeping in section 14, and allegations of abuse against staff in Appendix 3

7. Recognising Abuse And Taking Action

Staff, volunteers and governors must follow the procedures set out below in the event of a safeguarding issue.

Please note – in this and subsequent sections, you should take any references to the DSL to mean “the DSL (or deputy DSL)”.

7.1 If A Child Is Suffering Or Likely To Suffer Harm, Or In Immediate Danger

Call the Police immediately on 999.

Make a referral to children’s social care and/or the police **immediately**. **Anyone can make a referral.**

Tell the DSL (see section 5.2) as soon as possible if you make a referral directly.

Referrals are made through the Dudley Front Door Portal:

<https://childrensocialcare.dudley.gov.uk/web/portal/pages/safeguarding>

<https://www.gov.uk/report-child-abuse-to-local-council>

7.2 If A Child Makes A Disclosure To You

If a child discloses a safeguarding issue to you, you should:

- Listen to and believe them. Allow them time to talk freely and do not ask leading questions
- Stay calm and do not show that you are shocked or upset
- Tell the child they have done the right thing in telling you. Do not tell them they should have told you sooner
- Explain what will happen next and that you will have to pass this information on. Do not promise to keep it a secret
- Write up your conversation as soon as possible in the child’s own words. Stick to the facts, and do not put your own judgement on it
- Sign and date the write-up and pass it on to the DSL. Alternatively, if appropriate, make a referral to children’s social care and/or the police directly (see 7.1), and tell the DSL as soon as possible that you have done so. Aside from these people, do not disclose the information to anyone else unless told to do so by a relevant authority involved in the safeguarding process

Bear in mind that some children may:

- Not feel ready, or know how to tell someone that they are being abused, exploited or neglected
- Not recognise their experiences as harmful
- Feel embarrassed, humiliated or threatened. This could be due to their vulnerability, disability, sexual orientation and/or language barriers

None of this should stop you from having a ‘professional curiosity’ and speaking to the DSL if you have concerns about a child.

7.3 If You Discover That FGM Has Taken Place Or A Pupil Is At Risk Of FGM

Keeping Children Safe in Education explains that FGM comprises “all procedures involving partial or total removal of the external female genitalia, or other injury to the female genital organs”.

FGM is illegal in the UK and a form of child abuse with long-lasting, harmful consequences. It is also known as ‘female genital cutting’, ‘circumcision’ or ‘initiation’.

Possible indicators that a pupil has already been subjected to FGM, and factors that suggest a pupil may be at risk, are set out in Appendix 4 of this policy.

Any teacher who either:

- Is informed by a girl under 18 that an act of FGM has been carried out on her
- Observes physical signs which appear to show that an act of FGM has been carried out
- Must immediately report this to the police, personally. This is a mandatory statutory duty, and teachers will face disciplinary sanctions for failing to meet it.
- Unless they have been specifically told not to disclose, they should also discuss the case with the DSL and involve children's social care as appropriate.
- **Any other member of staff** who discovers that an act of FGM appears to have been carried out on a **pupil under 18** must speak to the DSL and follow our local safeguarding procedures.
- The duty for teachers mentioned above does not apply in cases where a pupil is *at risk* of FGM or FGM is suspected but is not known to have been carried out. Staff should not examine pupils.
- **Any member of staff** who suspects a pupil is *at risk* of FGM or suspects that FGM has been carried out or appears to have been a victim of FGM should speak to the DSL and follow our local safeguarding procedures which is to call the police.

7.4 If You Have Concerns About A Child (As Opposed To Believing A Child Is Suffering Or Likely To Suffer From Harm, Or Is In Immediate Danger)

Figure 1 below, before section 7.7, illustrates the procedure to follow if you have any concerns about a child's welfare.

Where possible, speak to the DSL first to agree a course of action.

If in exceptional circumstances the DSL is not available, this should not delay appropriate action being taken. Speak to a member of the senior leadership team and/or take advice from local authority children's social care <https://childrensocialcare.dudley.gov.uk/web/portal/pages/safeguarding>. You can also seek advice at any time from the NSPCC helpline on 0808 800 5000. Share details of any actions you take with the DSL as soon as practically possible.

Make a referral to local authority children's social care directly, if appropriate (see 'Referral' below). Share any action taken with the DSL as soon as possible.

Referral

If it is appropriate to refer the case to local authority children's social care or the police, the DSL will make the referral or support you to do so.

If you make a referral directly (see section 7.1), you must tell the DSL as soon as possible.

The local authority will make a decision within 1 working day of a referral about what course of action to take and will let the person who made the referral know the outcome. The DSL or person who made the referral must follow up with the local authority if this information is not made available, and ensure outcomes are properly recorded.

If the child's situation does not seem to be improving after the referral, the DSL or person who made the referral must follow local escalation procedures to ensure their concerns have been addressed and that the child's situation improves. When contacting Dudley Front Door they will screen your request and provide advice. If you receive no response you should follow the necessary steps on the portal.

Early Help Assessment

If an early help assessment is appropriate, the DSL will generally lead on liaising with other agencies and setting up an inter-agency assessment as appropriate. Staff may be required to support other agencies and professionals in an early help assessment, in some cases acting as the lead practitioner. We will discuss and agree, with statutory safeguarding partners, levels for the different types of assessment, as part of local arrangements.

The DSL will keep the case under constant review and the school will consider a referral to local authority children's social care if the situation does not seem to be improving. Timelines of interventions will be monitored and reviewed.

Any child may benefit from early help, but all staff are particularly alert to the potential need for early help for a child who: -

- is disabled or has certain health conditions and has specific additional needs
- has special educational needs (whether or not they have a statutory Education, Health and Care Plan)
- has a mental health need
- is a young carer
- is showing signs of being drawn in to anti-social or criminal behaviour, including gang involvement and association with organised crime groups or county lines
- is frequently missing/goes missing from school, care or from home.
- is at risk of modern slavery, trafficking, sexual or criminal exploitation.
- is at risk of being radicalised or exploited
- has a family member in prison, or is affected by parental offending
- is in a family circumstance presenting challenges for the child, such as drug or alcohol misuse, adult mental health issues and domestic abuse.
- is misusing alcohol or other drugs themselves.
- has returned home to their family from care
- is at risk of 'honour'-based abuse such as Female Genital Mutilation or Forced Marriage
- is a privately fostered child and
- is persistently absent from education, including persistent absences for part of the school day
- The DSL ensures that all staff are aware of the early help process and understand their role in it. This includes identifying emerging problems, liaising with the DSL/DDSL, sharing information with other professionals to support early identification and assessment and, in some cases, acting as the lead professional in undertaking an early help assessment. Guidance documents can be accessed at the following links:
- Information on Early help for children and families can be found at the following address: <https://www.dudley.gov.uk/residents/care-and-health/children-and-family-care/early-help-for-children-and-families/>
- If a referral is deemed necessary to escalate beyond early help the DSL will follow escalation procedures:

Child in Need (Section 17)

If the DSL considers that the welfare concerns indicate that a Child in Need referral is appropriate, they will speak with parents/child and obtain their consent for referral to local authority MASH or the appropriate social care team if a different authority, to request an assessment.

If parents refuse to give consent, but the child's needs are not being met, the DSL will discuss these issues with MASH.

Appropriate school staff will attend Child in Need (CIN) meetings convened by Children's Social Care when children are deemed to require Section 17 services.

Child Protection (Section 47)

If the local authority has reasonable cause to suspect that a child is suffering, or likely to suffer, significant harm, they make enquires under Section 47 to enable them to decide whether they should take any action to safeguard and promote the child's welfare. This duty also applies if a child is subject to an emergency protection order (under S44 of the Children Act 1989) or in police protective custody (under S46 of the Children Act 1989). Children's Services will convene an Initial Child Protection Conference (ICPC) once a child protection enquiry under Section 47 of the Children Act 1989 has been undertaken and the child is judged to be at continuing risk of significant harm. A review conference (RCPC) will take place once a child has been made the subject of a Child Protection Plan to monitor the safety of the child and the required reduction in risk.

Between conferences regular meetings of a core group will take place to monitor the progress of the child protection plan. The DSL/DDSL (sometimes other staff members) will attend the child protection conference on behalf of the school. The person attending will have as much relevant and up to date information about the child as possible. They will contribute to a recommendation on the risks/protective factors for the family from their information and a view on the need for a child protection plan. We understand the importance of our attendance and contribution at these conferences and whether we attend or not we know that there is a requirement to complete a report containing these contributions.

Child protection conferences can be upsetting for parents. We recognise that we are likely to have more contact with parents than other professionals involved and will work in an open, honest, and transparent way with any parent whose child has been referred to MASH or whose child is subject to a child protection plan. Our responsibility is to promote the protection and welfare of all children and our aim is to achieve this in partnership with our parents/carers, wherever possible. 10.

Escalation process Dudley safeguarding childrens' board expects members of staff working directly with families to share information appropriately and work to plans agreed in all relevant forums. Good practice includes the expectation that constructive challenge amongst colleagues within agencies, and between agencies, provides a healthy approach to the work. This process will be kept as simple as possible and the aim will be to resolve difficulties at a professional practitioner level, wherever possible and always in a restorative way.

We recognise that differences in status and experience may affect the confidence of some workers to pursue this course of action, and support should be sought from the DSL/DDSL. If we believe that concerns regarding a child are not being addressed and outcomes are not improving, we understand the expectations that we will escalate our concerns in line with the Professional Challenge and Resolution Policy until a satisfactory conclusion is reached. When we use professional challenge and/or the escalation process we will set out clearly what we want to achieve as a result of the challenge/escalation, what we expect to happen and the desired outcome.

7.5 If You Have Concerns About Extremism

If a child is not suffering or likely to suffer from harm, or in immediate danger, where possible speak to the DSL first to agree a course of action.

If in exceptional circumstances the DSL is not available, this should not delay appropriate action being taken. Speak to a member of the senior leadership team and/or seek advice from local authority

children's social care. Make a referral to local authority children's social care directly, if appropriate (see 'Referral' above). Inform the DSL or deputy as soon as practically possible after the referral.

Where there is a concern, the DSL will consider the level of risk and decide which agency to make a referral to Prevent via a referral form that is emailed to: ctu_gateway@west-midlands.pnn.police.uk for identifying and supporting individuals at risk of being drawn into terrorism, or the local authority children's social care team.

The DfE also has a dedicated telephone helpline, 020 7340 7264, which school staff and governors can call to raise concerns about extremism with respect to a pupil. You can also email counter.extremism@education.gov.uk. Note that this is not for use in emergency situations.

In an emergency, call 999 or the confidential anti-terrorist hotline on 0800 789 321 if you:

- Think someone is in immediate danger
- Think someone may be planning to travel to join an extremist group
- See or hear something that may be terrorist-related

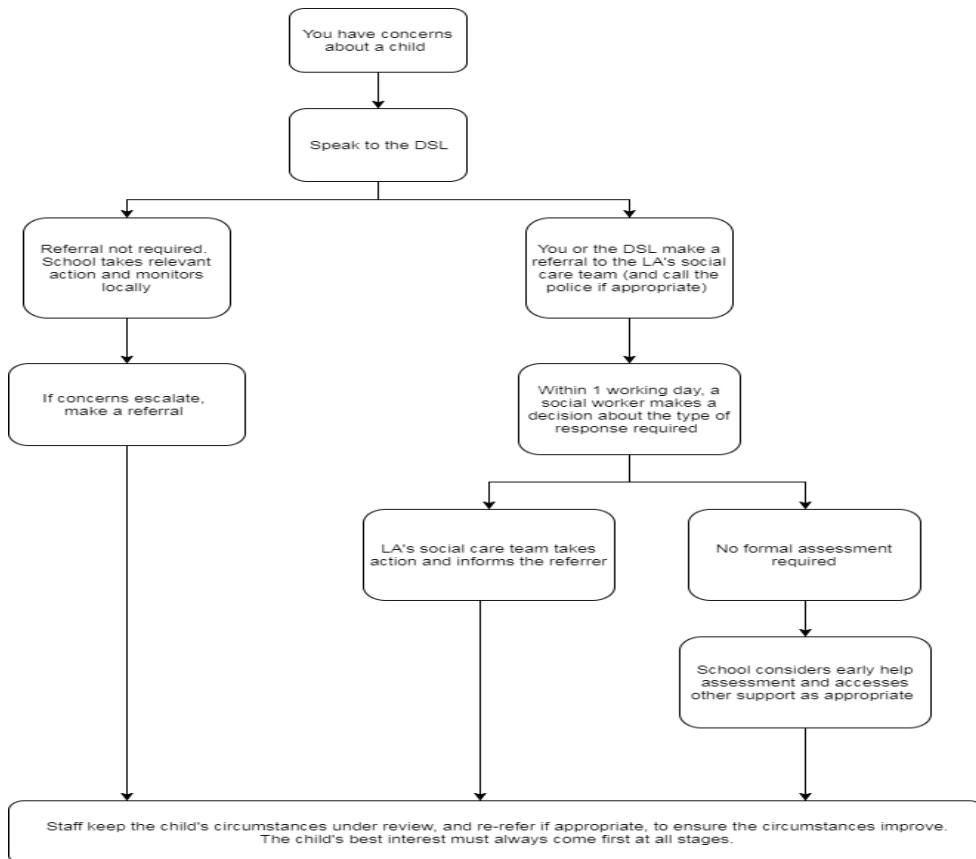
7.6 If You Have A Concern About Mental Health

- Mental health problems can, in some cases, be an indicator that a child has suffered or is at risk of suffering abuse, neglect or exploitation.
- Staff will be alert to behavioural signs that suggest a child may be experiencing a mental health problem or be at risk of developing one.
- If you have a mental health concern about a child that is also a safeguarding concern, take immediate action by following the steps in section 7.4.
- If you have a mental health concern that is **not** also a safeguarding concern, speak to the DSL to agree a course of action.
- All staff have accessed a basic level of mental health training.
- All schools have a dedicated mental health lead
- Our mental health provision consists of a tiered system localised to each school which staff, students and parents understand
- Our students can access a level of support which fits and meets individual needs
- We provide support and care to ensure our children achieve the best possible outcomes despite adversity
- Staff understand the need to report immediately any mental health concerns and with appropriate management and care, children will thrive and flourish

Targeted Support Mental Health



Figure 1: procedure if you have concerns about a child's welfare (as opposed to believing a child is suffering or likely to suffer from harm, or in immediate danger)
(Note – if the DSL is unavailable, this sho



7.7 Concerns about a staff member, supply teacher, volunteer or contractor

If you have concerns about a member of staff (including a supply teacher, volunteer or contractor), or an allegation is made about a member of staff (including a supply teacher, volunteer or contractor) posing a risk of harm to children, speak to the Headteacher as soon as possible. If the concerns/allegations are about the Headteacher, speak to the Chair of Governors.

The Headteacher/Chair of Governors will then follow the procedures set out in Appendix 3, if appropriate.

Where you believe there is a conflict of interest in reporting a concern or allegation about a member of staff (including a supply teacher, volunteer or contractor) to the Headteacher, report it directly to the local authority designated officer (LADO).

If you receive an allegation relating to an incident where an individual or organisation was using the school premises for running an activity for children, follow our school safeguarding policies and procedures, informing the LADO, as you would with any safeguarding allegation.

Where appropriate, the school will inform Ofsted of the allegation and actions taken, within the necessary timescale (see Appendix 3 for more detail).

Inappropriate behaviour by staff/supply staff/volunteers could take the following forms:

- Physical - For example, the intentional use of force as a punishment, slapping, use of objects to hit with, throwing objects, or rough physical handling.
- Emotional - For example, intimidation, belittling, scapegoating, sarcasm, lack of respect for children's rights, and attitudes that discriminate on the grounds of race, gender, disability, or sexuality.
- Sexual - For example, sexualised behaviour towards pupils, sexual harassment, inappropriate phone calls and texts, images via social media, sexual assault, and rape.
- Neglect - For example, failing to act to protect a child or children, failing to seek medical attention or failure to carry out an appropriate risk assessment.
- Spiritual Abuse - For example, using undue influence or pressure to control individuals or ensure obedience, follow religious practices that are harmful such as beatings or starvation.

If a child makes an allegation about a member of staff, supply staff, Governor, visitor or volunteer the Headteacher must be informed immediately. The Headteacher must carry out an urgent initial consideration to establish whether there is substance to the allegation.

The Headteacher should not carry out the investigation him/herself or interview pupils. The Headteacher/Principal will exercise and be accountable for their professional judgement on the action to be taken as follows: If the actions of the member of staff, and the consequences of the actions, raise credible Child Protection concerns the Headteacher will notify the Dudley Designated Officer (LADO) The LADO will liaise with the Chair of Governors and advise about action to be taken and may initiate internal referrals within Dudley Childrens Social Care to address the needs of children likely to have been affected

If the actions of the member of staff, and the consequences of the actions, do not raise credible child protection concerns, but do raise other issues in relation to the conduct of the member of staff or the pupil. These should be addressed through the school's own internal procedures.

If the Headteacher decides that the allegation is without foundation and no further formal action is necessary, all those involved should be informed of this conclusion, and the reasons for the decision should be recorded on the child safeguarding file.

Where we are not the employer of an individual, we still have responsibility to ensure allegations are dealt with appropriately and that they liaise with relevant parties (this includes supply teachers and volunteers). In no circumstances will our school decide to cease to use a supply teacher due to safeguarding concerns, without finding out the facts and liaising with the LADO to determine a suitable outcome.

Our Governing body will discuss with the agency whether it is appropriate to suspend the supply teacher, or redeploy them to another part of the school, whilst they carry out their investigation

Where an allegation has been made against the Headteacher then the Chair of the Governing Body takes on the role of liaising with the LADO in determining the appropriate way forward. <https://www.staffsccb.org.uk/wp-content/uploads/2020/09/Allegations-of-abuse-made-against-a-person-who-works-with-children.pdf>
allegations@dudley.gov.uk

Where the allegation is against the sole proprietor, the referral should be made to the LADO directly.

7.8 Allegations Of Abuse Made Against Other Pupils

We recognise that children are capable of abusing their peers. Abuse will never be tolerated or passed off as “banter”, “just having a laugh” or “part of growing up”, as this can lead to a culture of unacceptable behaviours and an unsafe environment for pupils.

We also recognise the gendered nature of child-on-child abuse. However, all child-on-child abuse is unacceptable and will be taken seriously.

Most cases of pupils hurting other pupils will be dealt with under our school’s behaviour policy, but this child protection and safeguarding policy will apply to any allegations that raise safeguarding concerns. This might include where the alleged behaviour:

- Is serious, and potentially a criminal offence
- Could put pupils in the school at risk
- Is violent
- Involves pupils being forced to use drugs or alcohol
- Involves sexual exploitation, sexual abuse or sexual harassment, such as indecent exposure, sexual assault, upskirting or sexually inappropriate pictures or videos (including the sharing of nudes and semi-nudes)

See Appendix 4 for more information about child-on-child abuse.

Procedures for dealing with allegations of child-on-child abuse

If a pupil makes an allegation of abuse against another pupil:

- You must record the allegation and tell the DSL, but do not investigate it
- The DSL will contact the local authority children’s social care team and follow its advice, as well as the police if the allegation involves a potential criminal offence
- The DSL will put a risk assessment and support plan into place for all children involved (including the victim(s), the child(ren) against whom the allegation has been made and any others affected) with a named person they can talk to if needed. This will include considering school transport as a potentially vulnerable place for a victim or alleged perpetrator(s)

- The DSL will contact the children and adolescent mental health services (CAMHS), if appropriate

If the incident is a criminal offence and there are delays in the criminal process, the DSL will work closely with the police (and other agencies as required) while protecting children and/or taking any disciplinary measures against the alleged perpetrator. We will ask the police if we have any questions about the investigation.

All child on child abuse, bullying and discriminatory behaviour will be investigated and actioned aligned to our behaviour policy. A six week monitoring process will be implemented where the victim will be monitored weekly by a member of the safeguarding team. At the six week point the DSL/DDSL will interview the victim and if satisfied with the resolution and no further issues have taken place will close the case. Parents and victims will be included in the case closure decision.

Creating a supportive environment in school and minimising the risk of child-on-child abuse

We recognise the importance of taking proactive action to minimise the risk of child-on-child abuse, and of creating a supportive environment where victims feel confident in reporting incidents.

To achieve this, we will:

- Challenge any form of derogatory or sexualised language or inappropriate behaviour between peers, including requesting or sending sexual images
- Be vigilant to issues that particularly affect different genders – for example, sexualised or aggressive touching or grabbing towards female pupils, and initiation or hazing type violence with respect to boys
- Ensure our curriculum helps to educate pupils about appropriate behaviour and consent
- Ensure pupils are able to easily and confidently report abuse using our reporting systems (as described in section 7.10 below)
- Ensure staff reassure victims that they are being taken seriously
- Be alert to reports of sexual violence and/or harassment that may point to environmental or systemic problems that could be addressed by updating policies, processes and the curriculum, or could reflect wider issues in the local area that should be shared with safeguarding partners
- Support children who have witnessed sexual violence, especially rape or assault by penetration. We will do all we can to make sure the victim, alleged perpetrator(s) and any witnesses are not bullied or harassed
- Consider intra-familial harms and any necessary support for siblings following a report of sexual violence and/or harassment
- Ensure staff are trained to understand:
 - How to recognise the indicators and signs of child-on-child abuse, and know how to identify it and respond to reports
 - That even if there are no reports of child-on-child abuse in school, it does not mean it is not happening – staff should maintain an attitude of “it could happen here”
 - That if they have any concerns about a child’s welfare, they should act on them immediately rather than wait to be told, and that victims may not always make a direct report. For example:
 - Children can show signs or act in ways they hope adults will notice and react to
 - A friend may make a report
 - A member of staff may overhear a conversation
 - A child’s behaviour might indicate that something is wrong
 - That certain children may face additional barriers to telling someone because of their vulnerability, disability, gender, ethnicity and/or sexual orientation

- That a pupil harming a peer could be a sign that the child is being abused themselves, and that this would fall under the scope of this policy
- The important role they have to play in preventing child-on-child abuse and responding where they believe a child may be at risk from it
- That they should speak to the DSL if they have any concerns
- That social media is likely to play a role in the fall-out from any incident or alleged incident, including for potential contact between the victim, alleged perpetrator(s) and friends from either side

The DSL will take the lead role in any disciplining of the alleged perpetrator(s). We will provide support at the same time as taking any disciplinary action.

Disciplinary action can be taken while other investigations are going on, e.g. by the police. The fact that another body is investigating or has investigated an incident doesn't (in itself) prevent our school from coming to its own conclusion about what happened and imposing a penalty accordingly. We will consider these matters on a case-by-case basis, taking into account whether:

- Taking action would prejudice an investigation and/or subsequent prosecution – we will liaise with the police and/or local authority children's social care to determine this
- There are circumstances that make it unreasonable or irrational for us to reach our own view about what happened while an independent investigation is ongoing

7.9 Sharing Of Nudes And Semi-Nudes ('Sexting')

[guidance from the UK Council for Internet Safety](#)

If you are made aware of an incident involving the consensual or non-consensual sharing of nude or semi-nude images/videos (also known as 'sexting' or 'youth produced sexual imagery'), you must report it to the DSL immediately.

You must not:

- View, copy, print, share, store or save the imagery yourself, or ask a pupil to share or download it (if you have already viewed the imagery by accident, you must report this to the DSL)
- Delete the imagery or ask the pupil to delete it
- Ask the pupil(s) who are involved in the incident to disclose information regarding the imagery (this is the DSL's responsibility)
- Share information about the incident with other members of staff, the pupil(s) it involves or their, or other, parents and/or carers
- Say or do anything to blame or shame any young people involved

You should explain that you need to report the incident, and reassure the pupil(s) that they will receive support and help from the DSL.

Initial Review Meeting

Following a report of an incident, the DSL will hold an initial review meeting with appropriate school staff – this may include the staff member who reported the incident and the safeguarding or leadership team that deals with safeguarding concerns. This meeting will consider the initial evidence and aim to determine:

- Whether there is an immediate risk to pupil(s)
- If a referral needs to be made to the police and/or children's social care
- If it is necessary to view the image(s) in order to safeguard the young person (in most cases, images or videos should not be viewed)
- What further information is required to decide on the best response

- Whether the image(s) has been shared widely and via what services and/or platforms (this may be unknown)
- Whether immediate action should be taken to delete or remove images or videos from devices or online services
- Any relevant facts about the pupils involved which would influence risk assessment
- If there is a need to contact another school, college, setting or individual
- Whether to contact parents or carers of the pupils involved (in most cases parents/carers should be involved)

The DSL will make an immediate referral to police and/or children's social care if:

- The incident involves an adult
- There is reason to believe that a young person has been coerced, blackmailed or groomed, or if there are concerns about their capacity to consent (for example, owing to SEN)
- What the DSL knows about the images or videos suggests the content depicts sexual acts which are unusual for the young person's developmental stage, or are violent
- The imagery involves sexual acts and any pupil in the images or videos is under 13
- The DSL has reason to believe a pupil is at immediate risk of harm owing to the sharing of nudes and semi-nudes (for example, the young person is presenting as suicidal or self-harming)

If none of the above apply then the DSL, in consultation with the Headteacher and other members of staff as appropriate, may decide to respond to the incident without involving the police or children's social care. The decision will be made and recorded in line with the procedures set out in this policy.

Further Review By The DSL

If at the initial review stage a decision has been made not to refer to police and/or children's social care, the DSL will conduct a further review to establish the facts and assess the risks.

They will hold interviews with the pupils involved (if appropriate).

If at any point in the process there is a concern that a pupil has been harmed or is at risk of harm, a referral will be made to children's social care and/or the police immediately.

Informing Parents/Carers

The DSL will inform parents/carers at an early stage and keep them involved in the process, unless there is a good reason to believe that involving them would put the pupil at risk of harm.

Referring To The Police

If it is necessary to refer an incident to the police, this will be assessed by the safeguarding team and decision to advise parents to go to the police or a referral will be made to the school's police community support officer.

Recording Incidents

All incidents of sharing of nudes and semi-nudes, and the decisions made in responding to them, will be recorded. The record-keeping arrangements set out in section 14 of this policy also apply to recording these incidents.

Curriculum Coverage

Pupils are taught about the issues surrounding the sharing of nudes and semi-nudes as part of our PSHE curriculum. Teaching covers the following in relation to the sharing of nudes and semi-nudes:

- What it is
- How it is most likely to be encountered

- The consequences of requesting, forwarding or providing such images, including when it is and is not abusive and when it may be deemed as online sexual harassment
- Issues of legality
- The risk of damage to people's feelings and reputation
- Pupils also learn the strategies and skills needed to manage:
- Specific requests or pressure to provide (or forward) such images
- The receipt of such images

This policy on the sharing of nudes and semi-nudes is also shared with pupils so they are aware of the processes the school will follow in the event of an incident.

7.10 Reporting Systems For Our Pupils

Where there is a safeguarding concern, we will take the child's wishes and feelings into account when determining what action to take and what services to provide.

We recognise the importance of ensuring pupils feel safe and comfortable to come forward and report any concerns and/or allegations.

To achieve this, we:

- Ensure students understand they have a platform of support and a team of highly skilled people who are on hand should they need to disclose or talk through personal challenges
- Ensure our reporting systems are well promoted, easily understood and easily accessible for pupils
- Make it clear to pupils that their concerns will be taken seriously, and that they can safely express their views and give feedback
- Students can speak to any member of staff as they have been trained to deal with disclosures.
- Students are made aware of how to make disclosures in PSHE and assemblies.
- Following disclosures pupils will be supported by the safeguarding team.

8. Online Safety And The Use Of Mobile Technology

Online Safety, meeting the digital and technology standards

We understand the risks associated with the online world and recognise the importance of safeguarding children from potentially harmful and inappropriate online material. We understand that technology is a significant component in many safeguarding and wellbeing issues.

We understand that meeting the minimum statutory digital technology requirements does not protect a school or MAT from digital risk in today's climate. We therefore ensure systems and solutions are securely in place which provide a complete online safety infrastructure that protects our whole school community. These systems have been carefully engineered by specialist teams to ensure these systems are robust in keeping our communities safe online:

Filtering and monitoring processes:

- We commission specialists to deliver against the 4 factors needed for maximum safety and rich, age-appropriate online learning.
- Real-time filtering ensures there is never a delay between dangerous content going live and the filters ability to block it.
- All content is textually analysed as it streams to the user so over blocking is eliminated.
- Safety features apply to devices belonging to our school/MAT whether in school or remove.
- Proactive real-time monitoring captures activity as it happens
- Captures activity on and offline which may indicate risks outside of the web browser such as word documents, messaging apps or encrypted "dark web" browser.
- 24/7 moderators will be contacted by phone for urgent risks and review captured texts to minimise false positives.
- Alerts are sent in real-time by phone, email, and stored within the intuitive portal for review.

Additional online safety measures to protect our whole school community:

- Have robust processes (including filtering and monitoring systems) in place to ensure the online safety of pupils, staff, volunteers and governors
- Protect and educate the whole school community in its safe and responsible use of technology, including mobile and smart technology (which we refer to as 'mobile phones')
- Set clear guidelines for the use of mobile phones for the whole school community
- Establish clear mechanisms to identify, intervene in and escalate any incidents or concerns, where appropriate
-

It is essential that children are safeguarded from harmful online content and wider online harms and take a whole school approach that protects, empowers and educates students and staff in their use of technology and establishes mechanisms to identify, intervene in, and escalate any concerns where appropriate.

We believe that safeguarding works best when it's an entire school community approach and have therefore introduced the safer school's app to our students, staff and parents. The app supports complete digital safeguarding and incorporates a training toolkit to ensure our stakeholders access another level of safeguarding learning. School leaders will work with parents to build an understanding of the shared responsibilities of parents to educate and support their children, and of the school to ensure the welfare of all children. This includes the need for referrals to other agencies in some situations and the way we both filter and monitor online content on academy devices.

We ensure that pupils are taught about safeguarding, including online safety, through various teaching and learning opportunities, as part of providing a broad and balanced curriculum including the DfE's *Teaching Online Safety in School*: <https://www.gov.uk/government/publications/teaching-online-safety-in-schools/teaching-online-safety-in-schools> and the four areas of risk in *Keeping Children Safe in Education*: content, contact, conduct and commerce.

The trust safeguarding lead and Information Technology (I.T.) lead, work in collaboration to ensure online safety provision is securely embedded in the curriculum. I.T. teaching staff have completed online safety training and can proficiently use the safer schools app which is incorporated into lessons and resources.

The 4 key categories of risk

Our approach to online safety is based on addressing the following categories of risk:

- **Content** – being exposed to illegal, inappropriate or harmful content, such as pornography, fake news, racism, misogyny, self-harm, suicide, antisemitism, radicalisation and extremism
- **Contact** – being subjected to harmful online interaction with other users, such as peer-to-peer pressure, commercial advertising and adults posing as children or young adults with the intention to groom or exploit them for sexual, criminal, financial or other purposes
- **Conduct** – personal online behaviour that increases the likelihood of, or causes, harm, such as making, sending and receiving explicit images (e.g. consensual and non-consensual sharing of nudes and semi-nudes and/or pornography), sharing other explicit images and online bullying; and
- **Commerce** – risks such as online gambling, inappropriate advertising, phishing and/or financial scams

To meet our aims and address the risks above, we will:

- Educate pupils about online safety as part of our curriculum. For example:
- The safe use of social media, the internet and technology
- Keeping personal information private
- How to recognise unacceptable behaviour online
- How to report any incidents of cyber-bullying, ensuring pupils are encouraged to do so, including where they're a witness rather than a victim
- Understand how to use CEOP
- Access to the safer schools app
- Online safety features throughout the I.T. curriculum
- Safeguarding and I.T. lead work collaboratively in planning the curriculum and responding to online concerns
- Online safety is taught through our PSHE curriculum
- Equip our children with safeguarding advice, guidance and helplines to access when not in school
- Train staff, as part of their induction, on safe internet use and online safeguarding issues including cyber-bullying, the risks of online radicalisation, and the expectations, roles and responsibilities around filtering and monitoring. All staff members will receive refresher training as required and at least once each academic year
- Educate parents/carers about online safety via our website, communications sent directly to them and during parents' evenings and encouraging the use of the safer schools app. We will also share clear procedures with them so they know how to raise concerns about online safety
- Promote the safer schools app to all stakeholders to support safeguarding triangulation
- Make sure staff are aware of any restrictions placed on them with regards to the use of their mobile phone and cameras, for example that:

- Staff are allowed to bring their personal phones to school for their own use, but will limit such use to non-contact time when pupils are not present
- Staff will not take pictures or recordings of pupils on their personal phones or cameras
- Make all pupils, parents/carers, staff, volunteers and governors aware that they are expected to sign an agreement regarding the acceptable use of the internet in school, use of the school's ICT systems and use of their mobile and smart technology
- Explain the sanctions we will use if a pupil is in breach of our policies on the acceptable use of the internet and mobile phones
- Make sure all staff, pupils and parents/carers are aware that staff have the power to search pupils' phones, as set out in the [DfE's guidance on searching, screening and confiscation](#)
- Put in place robust filtering and monitoring systems to limit children's exposure to the 4 key categories of risk (described above) from the school's IT systems.
- We have an online safety policy which identifies the usage and expected behaviour of children/students. As a school we appreciate the value of technology and that appropriate filters are in place, yet this does not lead to unreasonable restrictions which would limit online teaching and safeguarding. Education at home/Remote learning: - Where children are being asked to learn online at home, our school will refer to and use the links and resources provided by the DfE; Safeguarding in schools, colleges and other providers and safeguarding in remote education.
- Carry out an annual review of our approach to online safety, supported by an annual risk assessment that considers and reflects the risks faced by our school community
- Provide regular safeguarding and children protection updates including online safety to all staff, at least annually, in order to continue to provide them with the relevant skills and knowledge to safeguard effectively
- Review the child protection and safeguarding policy, including online safety, annually and ensure the procedures and implementation are updated and reviewed regularly

For full details about our school's policies in these areas, please refer to our online safety policy and mobile phone policies which can be found on our website
<https://www.crestwoodschool.co.uk/policies-statements-guidance>

Guidance Documents:

- Government publications – teaching online safety in schools
- Children's Commissioner-Online Safety
- Teaching online safety in education settings
- Appropriate Filtering and Monitoring
- CEOP-Safety Centre
- National Cyber Security Centre
- NSPCC-Undertaking remote teaching safely
- 360 Degree Safe - Online Safety Review Tool
- UKCCIS-UK Council for Child Internet Safety

9. Working With Parents And Carers

At Crestwood we are committed to working in partnership with parents/carers to safeguard and promote the welfare of their children, and to support them to understand our statutory responsibilities in this area.

When new pupils join our school, parents/carers will be informed that we have a safeguarding policy. A copy will be provided to parents on request and is available on the school website. Parents/carers will be informed of our legal duty to assist our safeguarding colleagues in other agencies with child protection enquiries and what happens should we have cause to make a referral to the relevant local authority or other agencies.

We respect parents' rights to privacy and confidentiality and will not share sensitive information unless we have permission, or if it is necessary to do so to safeguard a child from harm.

We will seek to share with parents/carers any concerns we may have about their child before making a referral, unless to do so may place a child at increased risk of harm.

A lack of parental engagement or agreement regarding the concerns the school has about a child will not prevent the DSL from making a referral to the local authority in those circumstances and where it is appropriate to do so.

To keep children safe and provide appropriate care for them, the school requires parents to provide accurate and up to date information regarding:

- Full names and contact details of all adults with whom the child normally lives.
- Full names and contact details of all persons with parental responsibility (if different from above).
- Emergency contact details (if different from above) and at least 2 contacts
- Full details of any other adult authorised by the parent to collect the child from school (if different from the above).
- Any legal or criminal changes which effects parental responsibility e.g., bail conditions, court orders, Special Guardianship orders, Child arrangement orders etc

The school will retain this information on the pupil file. The school will only share information about pupils with adults who have parental responsibility for a pupil or where a parent has given permission and the school has been supplied with the adult's full details in writing.

We recognise that we are likely to be in regular contact with parents and carers. We will use these communications to reinforce the importance of children being safe online and parents/carers are likely to find it helpful to understand what systems schools use to filter and monitor online use. It will be especially important for parents/carers to be aware of what their children are being asked to do online, including the sites they will be asked to access and be clear who from the school (if anyone) their child is going to be interacting with online.

At Crestwood we update parents about safeguarding through letters, emails (both cohort specific and general advice and guidance) and the schools website.

9.1 Notifying Parents Or Carers

Where appropriate, we will discuss any concerns about a child with the child's parents or carers. The DSL will normally do this in the event of a suspicion or disclosure. Other staff will only talk to parents or carers about any such concerns following consultation with the DSL.

If we believe that notifying the parents or carers would increase the risk to the child, we will discuss this with the local authority children's social care team before doing so.

In the case of allegations of abuse made against other children, we will normally notify the parents or carers of all the children involved. We will think carefully about what information we provide about the other child involved, and when. We will work with the police and/or local authority children's social care to make sure our approach to information sharing is consistent.

The DSL will, along with any relevant agencies (this will be decided on a case-by-case basis):

- Meet with the victim's parents or carers, with the victim, to discuss what's being put in place to safeguard them, and understand their wishes in terms of what support they may need and how the report will be progressed
- Meet with the alleged perpetrator's parents or carers to discuss support for them, and what's being put in place that will impact them, e.g. moving them out of classes with the victim, and the reason(s) behind any decision(s)

10. Pupils With Special Educational Needs, Disabilities Or Health Issues

We recognise that pupils with SEND or certain health conditions can face additional safeguarding challenges, and are 3 times more likely to be abused than their peers.

Additional barriers can exist when recognising abuse and neglect in this group, including:

- Assumptions that indicators of possible abuse such as behaviour, mood and injury relate to the child's condition without further exploration
- Pupils being more prone to peer group isolation or bullying (including prejudice-based bullying) than other pupils
- The potential for pupils with SEN, disabilities or certain health conditions being disproportionately impacted by behaviours such as bullying, without outwardly showing any signs
- Communication barriers and difficulties in managing or reporting these challenges

We offer extra pastoral support for these pupils. This includes:

- Regular support and contact when necessary with students and parents.
- Regular pastoral meetings to discuss vulnerable students.
- Information is triangulated between form tutors, heads of years and other key support staff.

Any abuse involving pupils with SEND will require close liaison with the DSL (or deputy) and the SENCO.

11. Students With A Social Worker

Students may need a social worker due to safeguarding or welfare needs. We recognise that a child's experiences of adversity and trauma can leave them vulnerable to further harm as well as potentially creating barriers to attendance, learning, behaviour and mental health.

The DSL and all members of staff will work with and support social workers to help protect vulnerable children.

Where we are aware that a pupil has a social worker, the DSL will always consider this fact to ensure any decisions are made in the best interests of the pupil's safety, welfare and educational outcomes.

For example, it will inform decisions about:

- Responding to unauthorised absence or missing education where there are known safeguarding risks
- All absence will be reported to allocated social worker by email
- All staff understand the need to offer an extra layer of care for vulnerable and wider vulnerable children
- All staff understand the need for extra scrutiny with academic progress to eliminate disadvantaged children underachieving
- All staff understand the need to ensure disadvantaged children have every opportunity to achieve the best possible outcomes
- The provision of pastoral and/or academic support

12. Looked-After And Previously Looked-After Children

We will ensure that staff have the skills, knowledge and understanding to keep looked-after children and previously looked-after children safe. In particular, we will ensure that:

- Appropriate staff have relevant information about children's looked after legal status, contact arrangements with birth parents or those with parental responsibility, and care arrangements
- The DSL has details of children's social workers and relevant virtual school heads

We have appointed a designated teacher, Mr Boerm / Deputy Headteacher, who is responsible for promoting the educational achievement of looked-after children and previously looked-after children in line with [statutory guidance](#).

The designated teacher is appropriately trained and has the relevant qualifications and experience to perform the role.

As part of their role, the designated teacher will:

- Work closely with the DSL to ensure that any safeguarding concerns regarding looked-after and previously looked-after children are quickly and effectively responded to
- Work with virtual school heads to promote the educational achievement of looked-after and previously looked-after children, including discussing how pupil premium plus funding can be best used to support looked-after children and meet the needs identified in their personal education plans

13. Complaints And Concerns About School Safeguarding Policies

13.1 Complaints against staff

Complaints against staff that are likely to require a child protection investigation will be handled in accordance with our procedures for dealing with allegations of abuse made against staff (see Appendix 3).

13.2 Other Complaints

We encourage and pride ourselves on the collaborative working we do with our children and families. We foster an environment where all stakeholders have access to key members of staff to raise any concerns they have and access appropriate levels of support.

We have robust internal investigation processes and systems to follow in the event of complaints and are guided by professionals within the Trust. Our complaints policy states clearly the various stages of complaint and where to escalate concerns following completion and outcome of our complaints process. Our complaints policy is available on our school website for parents/carers and is also available on request.

Safeguarding concerns should be raised with school immediately.

If a concern means a child is at immediate risk, then the individual needs to contact the Police on 999 immediately and contact <https://childrensocialcare.dudley.gov.uk/web/portal/pages/safeguarding>. All visitors are given safeguarding information which outlines how to share concerns and code of conduct expected by visitors/contractors.

All other complaints are handled inline with the trust complaints policy

13.3 Whistle-Blowing

Invictus Education Trust Board of Trustees are committed to the highest possible standards of honesty and integrity, and we expect all staff to maintain these standards. However, all organisations face the risk of things going wrong from time to time, or of unknowingly harbouring illegal or unethical conduct. A culture of openness and accountability is essential in order to prevent such situations occurring or to address them when they do occur. We encourage staff to report suspected wrongdoing as soon as possible, in the knowledge that their concerns will be taken seriously and investigated as appropriate, and that their confidentiality will be respected. We provide staff with guidance on how to raise concerns, reassure staff that they should be able to raise genuine concerns without fear of reprisals, even if they turn out to be mistaken.

The whistleblowing policy applies to all employees of the trust, members, trustees, governors, consultants, contractors, casual and agency staff and volunteers.

14. Record-Keeping And Information Sharing

We will hold records in line with our records retention schedule.

All safeguarding concerns, discussions, decisions made and the reasons for those decisions, must be recorded in writing. If you are in any doubt about whether to record something, discuss it with the DSL.

Records will include:

- A clear and comprehensive summary of the concern
- Details of how the concern was followed up and resolved
- A note of any action taken, decisions reached and the outcome

Concerns and referrals will be kept in a separate child protection file for each child.

Any non-confidential records will be readily accessible and available. Confidential information and records will be held securely and only available to those who have a right or professional need to see them.

Safeguarding records relating to individual children will be retained for a reasonable period of time after they have left the school.

If a child for whom the school has, or has had, safeguarding concerns moves to another school, the DSL will ensure that their child protection file is forwarded as soon as possible, securely, and separately from the main pupil file.

To allow the new school/college to have support in place when the child arrives, this should be within:

- **5 days** for an in-year transfer, or within
- **The first 5 days** of the start of a new term

In addition, if the concerns are significant or complex, and/or social services are involved, the DSL will speak to the DSL of the receiving school and provide information to enable them to have time to make any necessary preparations to ensure the safety of the child.

CPOMS is our preferred safeguarding software package where all incidents of safeguarding, child protection records and concerns for our students are recorded electronically. Information is recorded

in a central repository where relevant people are alerted immediately and where chronological reports can be produced for vulnerable children.

Child protection information will be stored and handled in line with the principles set out in the Data Protection Act (1998) and the GDPR (2018) and the Trust data protection

The Data Protection Act and *GDPR* do not prevent the sharing of information for the purposes of keeping children safe. Fears about sharing information will never be allowed to stand in the way of the need to safeguard and promote the welfare and protect the safety of children.

Paper records of concern forms and other written information will be stored in a locked facility accessed only by the DSL and those identified as appropriate within the school. Any electronic information will be password protected and only made available to relevant individuals. Every effort will be made to prevent unauthorised access.

Child protection information will be stored separately from the pupil's academy file and the academy file will be 'tagged' to indicate that separate information is held. If such records need to be sent to a new school or academy, they will be sent separate from the pupil's file and under a confidential cover or in an encrypted electronic file.

Child protection records are normally exempt from the disclosure provisions of the *Data Protection Act*, which means that children and parents do not have an automatic right to see them. If any member of staff receives a request from a pupil or parent to see child protection records, they will refer the request to the Principal or DSL. The *Data Protection Act* does not prevent academy staff from sharing information with relevant agencies, where that information may help to protect a child.

Link to data protection tool kit for schools:

<https://www.gov.uk/government/publications/data-protection-toolkit-for-schools>

In addition:

- Appendix 2 sets out our policy on record-keeping specifically with respect to recruitment and pre-appointment checks
- Appendix 3 sets out our policy on record-keeping with respect to allegations of abuse made against staff

15. Training

15.1 All Staff

All staff members will undertake safeguarding and child protection training at induction, including on whistle-blowing procedures and online safety, to ensure they understand the school's safeguarding systems and their responsibilities, and can identify signs of possible abuse or neglect.

This training will be regularly updated and will:

- › Be integrated, aligned and considered as part of the whole-school safeguarding approach and wider staff training, and curriculum planning
- › Be in line with advice from safeguarding partners
- › Include online safety, including an understanding of the expectations, roles and responsibilities for staff around filtering and monitoring
- › Have regard to the Teachers' Standards to support the expectation that all teachers:

- Manage behaviour effectively to ensure a good and safe environment
- Have a clear understanding of the needs of all pupils

All staff will have training on the government's anti-radicalisation strategy, *Prevent*, to enable them to identify children at risk of being drawn into terrorism and to challenge extremist ideas.

Staff will also receive regular safeguarding and child protection updates, including on online safety, as required but at least annually (for example, through emails, e-bulletins and staff briefings and training sessions).

Contractors who are provided through a private finance initiative (PFI) or similar contract will also receive safeguarding training.

Volunteers will receive appropriate training..

15.2 The DSL And DDSL

Will undertake child protection and safeguarding training at least every 2 years.

In addition, they will update their knowledge and skills at regular intervals and at least annually (for example, through e-bulletins, meeting other DSLs, or taking time to read and digest safeguarding developments).

They will also undertake Prevent awareness training.

15.3 Governors

All governors receive training about safeguarding and child protection (including online safety) at induction, which is regularly updated. This is to make sure that they:

- Have the knowledge and information needed to perform their functions and understand their responsibilities, such as providing strategic challenge
- Can be assured that safeguarding policies and procedures are effective and support the school to deliver a robust whole-school approach to safeguarding

As the chair of governors may be required to act as the 'case manager' in the event that an allegation of abuse is made against the Headteacher, they receive training in managing allegations for this purpose.

15.4 Recruitment – Interview Panels

At least 1 person conducting any interview for any post at the school will have undertaken safer recruitment training. This will cover, as a minimum, the contents of Keeping Children Safe in Education, and will be in line with local safeguarding procedures.

See Appendix 2 of this policy for more information about our safer recruitment procedures.

15.5 Staff Who Have Contact With Pupils And Families

All staff who have contact with children and families will have supervisions which will provide them with support, coaching and training, promote the interests of children and allow for confidential discussions of sensitive issues.

16. Monitoring Arrangements

This policy will be reviewed **annually** by David Morris and Dan Elwell. At every review, it will be approved by the full governing board.

17. Links With Other Policies

This policy links to the following policies and procedures:

- Positive conduct
- Child on child abuse
- Staff [behaviour/code of conduct]
- Complaints
- Health and safety
- Attendance
- Online safety
- Mobile phone use
- Equality
- Relationships and sex education
- First aid
- Curriculum
- Designated teacher for looked-after and previously looked-after children
- Privacy notices

18. Site Security

We provide a secure sites which are controlled by precise management directives, but the site is only as secure as the people who use it. All people on our sites must adhere to the rules which govern it. Laxity can cause potential problems with safeguarding, therefore:

Visitors, volunteers, and students must only enter through the main entrances and after signing in at the offices will be issued with a school lanyard or visitor's pass.

- School has a clear system of ensuring staff are accompanied / supervised by regulated staff member. Any visitor on site who is not identifiable by a visitor's pass will be challenged by any staff member and this will be reported to a member of the Senior Leadership Team.
- Parents, carers, and grandparents attending functions have access only through the designated and supervised entrances, with tickets for visitors for appropriate school events.
- Children will only be allowed home with adults with parental responsibility or confirmed permission.
- Empty classrooms should have closed windows and doors.
- Children should never be allowed to leave school alone during school hours unless collected by an adult such as a parent who is doing so for a valid reason. They should report to the office to do this.
- Two members of staff are always on duty at break times.
- A health and safety audit are completed annually with risk assessment/safety planning and forms part of the Governors annual report. This will include a fire evacuation and Prevent risk assessment.
- The risk management of site security is managed by senior leaders/governance, and we have a clear system of risk assessments and review timescales of these

These appendices are based on the Department for Education's statutory guidance, **Keeping Children Safe in Education**.

Appendix 1: Types Of Abuse

Abuse, including neglect, and safeguarding issues are rarely standalone events that can be covered by 1 definition or label. In most cases, multiple issues will overlap.

Physical abuse may involve hitting, shaking, throwing, poisoning, burning or scalding, drowning, suffocating or otherwise causing physical harm to a child. Physical harm may also be caused when a parent or carer fabricates the symptoms of, or deliberately induces, illness in a child.

Emotional abuse is the persistent emotional maltreatment of a child such as to cause severe and adverse effects on the child's emotional development. Some level of emotional abuse is involved in all types of maltreatment of a child, although it may occur alone.

Emotional abuse may involve:

- Conveying to a child that they are worthless or unloved, inadequate, or valued only insofar as they meet the needs of another person
- Not giving the child opportunities to express their views, deliberately silencing them or 'making fun' of what they say or how they communicate
- Age or developmentally inappropriate expectations being imposed on children. These may include interactions that are beyond a child's developmental capability, as well as overprotection and limitation of exploration and learning, or preventing the child participating in normal social interaction
- Seeing or hearing the ill-treatment of another
- Serious bullying (including cyber-bullying), causing children frequently to feel frightened or in danger, or the exploitation or corruption of children

Sexual abuse involves forcing or enticing a child or young person to take part in sexual activities, not necessarily involving a high level of violence, whether or not the child is aware of what is happening. The activities may involve:

- Physical contact, including assault by penetration (for example, rape or oral sex) or non-penetrative acts such as masturbation, kissing, rubbing and touching outside of clothing
- Non-contact activities, such as involving children in looking at, or in the production of, sexual images, watching sexual activities, encouraging children to behave in sexually inappropriate ways, or grooming a child in preparation for abuse (including via the internet)

Sexual abuse is not solely perpetrated by adult males. Women can also commit acts of sexual abuse, as can other children.

Neglect is the persistent failure to meet a child's basic physical and/or psychological needs, likely to result in the serious impairment of the child's health or development. Neglect may occur during pregnancy as a result of maternal substance abuse.

Once a child is born, neglect may involve a parent or carer failing to:

- Provide adequate food, clothing and shelter (including exclusion from home or abandonment)
- Protect a child from physical and emotional harm or danger
- Ensure adequate supervision (including the use of inadequate care-givers)

- Ensure access to appropriate medical care or treatment

It may also include neglect of, or unresponsiveness to, a child's basic emotional needs.

Appendix 2: Safer Recruitment and DBS Checks – Policy and Procedures

Safer Recruitment Policy

Recruitment and selection process

The recruitment steps outlined below are based on part 3 of Keeping Children Safe in Education 2023. To make sure we recruit suitable people, we will ensure that those involved in the recruitment and employment of staff to work with children have received appropriate safer recruitment training.

We have put the following steps in place during our recruitment and selection process to ensure we are committed to safeguarding and promoting the welfare of children.

Advertising

When advertising roles, we will make clear:

- Our school's commitment to safeguarding and promoting the welfare of children
- That safeguarding checks will be undertaken
- The safeguarding requirements and responsibilities of the role, such as the extent to which the role will involve contact with children
- Whether or not the role is exempt from the Rehabilitation of Offenders Act 1974 and the amendments to the Exceptions Order 1975, 2013 and 2020. If the role is exempt, certain spent convictions and cautions are 'protected', so they do not need to be disclosed, and if they are disclosed, we cannot take them into account

Application forms

Our application forms will:

- Include a statement saying that it is an offence to apply for the role if an applicant is barred from engaging in regulated activity relevant to children (where the role involves this type of regulated activity)
- Include a copy of, or link to, our child protection and safeguarding policy and our policy on the employment of ex-offenders

Shortlisting

Our shortlisting process will involve at least 2 people and will:

- Consider any inconsistencies and look for gaps in employment and reasons given for them
- Explore all potential concerns

Once we have shortlisted candidates, we will ask shortlisted candidates to:

- Complete a self-declaration of their criminal record or any information that would make them unsuitable to work with children, so that they have the opportunity to share relevant information and discuss it at interview stage. The information we will ask for includes:
 - If they have a criminal history
 - Whether they are included on the barred list
 - Whether they are prohibited from teaching
 - Information about any criminal offences committed in any country in line with the law as applicable in England and Wales
 - Any relevant overseas information
- Sign a declaration confirming the information they have provided is true

We will also consider carrying out an online search on shortlisted candidates to help identify any incidents or issues that are publicly available online. Shortlisted candidates will be informed that we may carry out these checks as part of our due diligence process.

Seeking references and checking employment history

We will obtain references before interview. Any concerns raised will be explored further with referees and taken up with the candidate at interview.

When seeking references we will:

- Not accept open references
- Liaise directly with referees and verify any information contained within references with the referees
- Ensure any references are from the candidate's current employer and completed by a senior person. Where the referee is school based, we will ask for the reference to be confirmed by the Headteacher/principal as accurate in respect to disciplinary investigations
- Obtain verification of the candidate's most recent relevant period of employment if they are not currently employed
- Secure a reference from the relevant employer from the last time the candidate worked with children if they are not currently working with children
- Compare the information on the application form with that in the reference and take up any inconsistencies with the candidate
- Resolve any concerns before any appointment is confirmed

Interview and selection

When interviewing candidates, we will:

- Probe any gaps in employment, or where the candidate has changed employment or location frequently, and ask candidates to explain this
- Explore any potential areas of concern to determine the candidate's suitability to work with children
- Record all information considered and decisions made

Pre-appointment vetting checks

We will record all information on the checks carried out in the school's single central record (SCR). Copies of these checks, where appropriate, will be held in individuals' personnel files. We follow requirements and best practice in retaining copies of these checks, as set out below.

New staff

All offers of appointment will be conditional until satisfactory completion of the necessary pre-employment checks. When appointing new staff, we will:

- Verify their identity
- Obtain (via the applicant) an enhanced DBS certificate, including barred list information for those who will be engaging in regulated activity (see definition below). We will obtain the certificate before, or as soon as practicable after, appointment, including when using the DBS update service. We will not keep a copy of the certificate for longer than 6 months, but when the copy is destroyed we may still keep a record of the fact that vetting took place, the result of the check and recruitment decision taken
- Obtain a separate barred list check if they will start work in regulated activity before the DBS certificate is available
- Verify their mental and physical fitness to carry out their work responsibilities
- Verify their right to work in the UK. We will keep a copy of this verification for the duration of the member of staff's employment and for 2 years afterwards
- Verify their professional qualifications, as appropriate
- Ensure they are not subject to a prohibition order if they are employed to be a teacher
- Carry out further additional checks, as appropriate, on candidates who have lived or worked outside of the UK. These could include, where available:

- For all staff, including teaching positions: [criminal records checks for overseas applicants](#)
- For teaching positions: obtaining a letter from the professional regulating authority in the country where the applicant has worked, confirming that they have not imposed any sanctions or restrictions on that person, and/or are aware of any reason why that person may be unsuitable to teach
- Check that candidates taking up a management position* are not subject to a prohibition from management (section 128) direction made by the secretary of state
- Management positions are most likely to include, but are not limited to, Headteachers, principals and deputy/assistant Headteachers.

Regulated activity means a person who will be:

- Responsible, on a regular basis in a school or college, for teaching, training, instructing, caring for or supervising children; or
- Carrying out paid, or unsupervised unpaid, work regularly in a school or college where that work provides an opportunity for contact with children; or
- Engaging in intimate or personal care or overnight activity, even if this happens only once and regardless of whether they are supervised or not

Induction:

All staff will be made aware of the systems we have in place to support safeguarding.

These are explained as part of staff induction including

- The Safeguarding policy.
- The behaviour policy.
- Child on Child Abuse Policy
- The staff behaviour policy (sometimes called a code of conduct).
- The safeguarding response to children who go missing from education; and
- The role of the DSL (including the identity of the DSL and any deputies).
- At least part one of KCSIE 2023.

Existing staff

In certain circumstances we will carry out all the relevant checks on existing staff as if the individual was a new member of staff. These circumstances are when:

- There are concerns about an existing member of staff's suitability to work with children; or
- An individual moves from a post that is not regulated activity to one that is; or
- There has been a break in service of 12 weeks or more

We will refer to the DBS anyone who has harmed, or poses a risk of harm, to a child or vulnerable adult where:

- We believe the individual has engaged in [relevant conduct](#); or
- We believe the individual has received a caution or conviction for a relevant (automatic barring either with or without the right to make representations) offence, under the [Safeguarding Vulnerable Groups Act 2006 \(Prescribed Criteria and Miscellaneous Provisions\) Regulations 2009](#); or
- We believe the 'harm test' is satisfied in respect of the individual (i.e. they may harm a child or vulnerable adult or put them at risk of harm); and
- The individual has been removed from working in regulated activity (paid or unpaid) or would have been removed if they had not left

Agency and third-party staff

We will obtain written notification from any agency or third-party organisation that it has carried out the necessary safer recruitment checks that we would otherwise perform. We will also check that the person presenting themselves for work is the same person on whom the checks have been made.

Contractors

We will ensure that any contractor, or any employee of the contractor, who is to work at the school has had the appropriate level of DBS check (this includes contractors who are provided through a PFI or similar contract). This will be:

- An enhanced DBS check with barred list information for contractors engaging in regulated activity
- An enhanced DBS check, not including barred list information, for all other contractors who are not in regulated activity but whose work provides them with an opportunity for regular contact with children
- We will obtain the DBS check for self-employed contractors.
- We will not keep copies of such checks for longer than 6 months.
- Contractors who have not had any checks will not be allowed to work unsupervised or engage in regulated activity under any circumstances.
- We will check the identity of all contractors and their staff on arrival at the school.
- For self-employed contractors such as music teachers or sports coaches, we will ensure that appropriate checks are carried out to ensure that individuals are not disqualified under the 2018 Childcare Disqualification Regulations and Childcare Act 2006. Where we decide that an individual falls outside of the scope of these regulations and we do not carry out such checks, we will retain a record of our assessment. This will include our evaluation of any risks and control measures put in place, and any advice sought.

Trainee/student teachers

Where applicants for initial teacher training are salaried by us, we will ensure that all necessary checks are carried out.

Where trainee teachers are fee-funded, we will obtain written confirmation from the training provider that necessary checks have been carried out and that the trainee has been judged by the provider to be suitable to work with children.

Volunteers

We will:

- Never leave an unchecked volunteer unsupervised or allow them to work in regulated activity
- Obtain an enhanced DBS check with barred list information for all volunteers who are new to working in regulated activity
- Carry out a risk assessment when deciding whether to seek an enhanced DBS check without barred list information for any volunteers not engaging in regulated activity. We will retain a record of this risk assessment

Governors and Members

All All trustees, local governors and members will have an enhanced DBS check without barred list information. They will have an enhanced DBS check with barred list information if working in regulated activity.

The chair of the board will have their DBS check countersigned by the secretary of state.

All proprietors, trustees, local governors and members will also have the following checks:

- › A section 128 check (to check prohibition on participation in management under [section 128 of the Education and Skills Act 2008](#)). Section 128 checks are only required for local governors if they have retained or been delegated any management responsibilities.
- › Identity
- › Right to work in the UK
- › Other checks deemed necessary if they have lived or worked outside the UK

Staff working in alternative provision settings

Where we place a pupil with an alternative provision provider, we obtain written confirmation from the provider that they have carried out the appropriate safeguarding checks on individuals working there that we would otherwise perform.

Adults who supervise pupils on work experience

When organising work experience, we will ensure that policies and procedures are in place to protect children from harm.

We will also consider whether it is necessary for barred list checks to be carried out on the individuals who supervise a pupil under 16 on work experience. This will depend on the specific circumstances of the work experience, including the nature of the supervision, the frequency of the activity being supervised, and whether the work is regulated activity.

Pupils staying with host families

Where the school makes arrangements for pupils to be provided with care and accommodation by a host family to which they are not related (for example, during a foreign exchange visit), we will request enhanced DBS checks with barred list information on those people.

Where the school is organising such hosting arrangements overseas and host families cannot be checked in the same way, we will work with our partner schools abroad to ensure that similar assurances are undertaken prior to the visit.

Appendix 3: Allegations Of Abuse Made Against Staff

Allegations against staff (including low-level concerns) policy

Section 1: Allegations That May Meet The Harms Threshold

This section is based on 'Section 1: Allegations that may meet the harms threshold' in part 4 of Keeping Children Safe in Education.

This section applies to all cases in which it is alleged that a current member of staff, including a supply teacher, volunteer or contractor, has:

- Behaved in a way that has harmed a child, or may have harmed a child, and/or
- Possibly committed a criminal offence against or related to a child, and/or
- Behaved towards a child or children in a way that indicates they may pose a risk of harm to children, and/or
- Behaved or may have behaved in a way that indicates they may not be suitable to work with children – this includes behaviour taking place both inside and outside of school

If we're in any doubt as to whether a concern meets the harm threshold, we will consult our local authority designated officer (LADO).

We will deal with any allegation of abuse quickly, in a fair and consistent way that provides effective child protection while also supporting the individual who is the subject of the allegation.

A 'case manager' will lead any investigation. This will be the Headteacher, or the chair of governors where the Headteacher is the subject of the allegation. The case manager will be identified at the earliest opportunity.

Our procedures for dealing with allegations will be applied with common sense and judgement.

If we receive an allegation of an incident happening while an individual or organisation was using the school premises to run activities for children, we will follow our safeguarding policies and procedures and inform our LADO.

Suspension of the accused until the case is resolved

Suspension of the accused will not be the default position, and will only be considered in cases where there is reason to suspect that a child or other children is/are at risk of harm, or the case is so serious that there might be grounds for dismissal. In such cases, we will only suspend an individual if we have considered all other options available and there is no reasonable alternative.

Based on an assessment of risk, we will consider alternatives such as:

- Redeployment within the school so that the individual does not have direct contact with the child or children concerned
- Providing an assistant to be present when the individual has contact with children
- Redeploying the individual to alternative work in the school so that they do not have unsupervised access to children
- Moving the child or children to classes where they will not come into contact with the individual, making it clear that this is not a punishment and parents/carers have been consulted
- Temporarily redeploying the individual to another role in a different location, for example to an alternative school or other work for the trust

If in doubt, the case manager will seek views from the school's personnel adviser and the designated officer at the local authority, as well as the police and children's social care where they have been involved.

Definitions for outcomes of allegation investigations

- **Substantiated:** there is sufficient evidence to prove the allegation
- **Malicious:** there is sufficient evidence to disprove the allegation and there has been a deliberate act to deceive, or to cause harm to the subject of the allegation
- **False:** there is sufficient evidence to disprove the allegation
- **Unsubstantiated:** there is insufficient evidence to either prove or disprove the allegation (this does not imply guilt or innocence)
- **Unfounded:** to reflect cases where there is no evidence or proper basis which supports the allegation being made

Procedure for dealing with allegations

In the event of an allegation that meets the criteria above, the case manager will take the following steps:

- Conduct basic enquiries in line with local procedures to establish the facts to help determine whether there is any foundation to the allegation before carrying on with the steps below
- Discuss the allegation with the designated officer at the local authority. This is to consider the nature, content and context of the allegation and agree a course of action, including whether further enquiries are necessary to enable a decision on how to proceed, and whether it is necessary to involve the police and/or children's social care services. (The case manager may, on occasion, consider it necessary to involve the police *before* consulting the designated officer – for example, if the accused individual is deemed to be an immediate risk to children or there is evidence of a possible criminal offence. In such cases, the case manager will notify the designated officer as soon as practicably possible after contacting the police)
- Inform the accused individual of the concerns or allegations and likely course of action as soon as possible after speaking to the designated officer (and the police or children's social care services, where necessary). Where the police and/or children's social care services are involved, the case manager will only share such information with the individual as has been agreed with those agencies
- Where appropriate (in the circumstances described above), carefully consider whether suspension of the individual from contact with children at the school is justified or whether alternative arrangements such as those outlined above can be put in place. Advice will be sought from the designated officer, police and/or children's social care services, as appropriate
- Where the case manager is concerned about the welfare of other children in the community or the individual's family, they will discuss these concerns with the DSL and make a risk assessment of the situation. If necessary, the DSL may make a referral to children's social care
- **If immediate suspension is considered necessary**, agree and record the rationale for this with the designated officer. The record will include information about the alternatives to suspension that have been considered, and why they were rejected. Written confirmation of the suspension will be provided to the individual facing the allegation or concern within 1 working day, and the individual will be given a named contact at the school and their contact details
- **If it is decided that no further action is to be taken** in regard to the subject of the allegation or concern, record this decision and the justification for it and agree with the designated officer what information should be put in writing to the individual and by whom, as well as what action should follow both in respect of the individual and those who made the initial allegation
- **If it is decided that further action is needed**, take steps as agreed with the designated officer to initiate the appropriate action in school and/or liaise with the police and/or children's social care services as appropriate

- Provide effective support for the individual facing the allegation or concern, including appointing a named representative to keep them informed of the progress of the case and considering what other support is appropriate for example union representation or welfare counselling.
- Inform the parents or carers of the child/children involved about the allegation as soon as possible if they do not already know (following agreement with children's social care services and/or the police, if applicable). The case manager will also inform the parents or carers of the requirement to maintain confidentiality about any allegations made against teachers (where this applies) while investigations are ongoing. Any parent or carer who wishes to have the confidentiality restrictions removed in respect of a teacher will be advised to seek legal advice
- Keep the parents or carers of the child/children involved informed of the progress of the case (only in relation to their child – no information will be shared regarding the staff member)
- Make a referral to the DBS where it is thought that the individual facing the allegation or concern has engaged in conduct that harmed or is likely to harm a child, or if the individual otherwise poses a risk of harm to a child

If the school is made aware that the secretary of state has made an interim prohibition order in respect of an individual, we will immediately suspend that individual from teaching, pending the findings of the investigation by the Teaching Regulation Agency.

Where the police are involved, wherever possible the school will ask the police at the start of the investigation to obtain consent from the individuals involved to share their statements and evidence for use in the school's disciplinary process, should this be required at a later point.

Additional considerations for supply teachers and all contracted staff

If there are concerns or an allegation is made against someone not directly employed by the school, such as a supply teacher or contracted staff member provided by an agency, we will take the actions below in addition to our standard procedures.

- We will not decide to stop using an individual due to safeguarding concerns without finding out the facts and liaising with our LADO to determine a suitable outcome
- The governing board will discuss with the agency whether it is appropriate to suspend the individual, or redeploy them to another part of the school, while the school carries out the investigation
- We will involve the agency fully, but the school will take the lead in collecting the necessary information and providing it to the LADO as required
- We will address issues such as information sharing, to ensure any previous concerns or allegations known to the agency are taken into account (we will do this, for example, as part of the allegations management meeting or by liaising directly with the agency where necessary)

When using an agency, we will inform them of our process for managing allegations, and keep them updated about our policies as necessary, and will invite the agency's HR manager or equivalent to meetings as appropriate.

Timescales

We will deal with all allegations as quickly and effectively as possible and will endeavour to comply with the following timescales, where reasonably practicable:

- Any cases where it is clear immediately that the allegation is unsubstantiated or malicious should be resolved within 1 week
- If the nature of an allegation does not require formal disciplinary action, appropriate action should be taken within 3 working days

- If a disciplinary hearing is required and can be held without further investigation, this should be held within 15 working days

However, these are objectives only and where they are not met, we will endeavour to take the required action as soon as possible thereafter.

Specific actions

Action following a criminal investigation or prosecution

The case manager will discuss with the local authority's designated officer whether any further action, including disciplinary action, is appropriate and, if so, how to proceed, taking into account information provided by the police and/or children's social care services.

Conclusion of a case where the allegation is substantiated

If the allegation is substantiated and the individual is dismissed or the school ceases to use their services, or the individual resigns or otherwise ceases to provide their services, the school will make a referral to the DBS for consideration of whether inclusion on the barred lists is required.

If the individual concerned is a member of teaching staff, the school will consider whether to refer the matter to the Teaching Regulation Agency to consider prohibiting the individual from teaching.

Individuals returning to work after suspension

If it is decided on the conclusion of a case that an individual who has been suspended can return to work, the case manager will consider how best to facilitate this.

The case manager will also consider how best to manage the individual's contact with the child or children who made the allegation, if they are still attending the school.

Unsubstantiated, unfounded, false or malicious reports

If a report is:

- Determined to be unsubstantiated, unfounded, false or malicious, the DSL will consider the appropriate next steps. If they consider that the child and/or person who made the allegation is in need of help, or the allegation may have been a cry for help, a referral to children's social care may be appropriate
- Shown to be deliberately invented, or malicious, the school will consider whether any disciplinary action is appropriate against the individual(s) who made it

Unsubstantiated, unfounded, false or malicious allegations

If an allegation is:

- Determined to be unsubstantiated, unfounded, false or malicious, the LADO and case manager will consider the appropriate next steps. If they consider that the child and/or person who made the allegation is in need of help, or the allegation may have been a cry for help, a referral to children's social care may be appropriate
- Shown to be deliberately invented, or malicious, the school will consider whether any disciplinary action is appropriate against the individual(s) who made it

Confidentiality and information sharing

The school will make every effort to maintain confidentiality and guard against unwanted publicity while an allegation is being investigated or considered.

The case manager will take advice from the LADO, police and children's social care services, as appropriate, to agree:

- Who needs to know about the allegation and what information can be shared

- How to manage speculation, leaks and gossip, including how to make parents or carers of a child/children involved aware of their obligations with respect to confidentiality
- What, if any, information can be reasonably given to the wider community to reduce speculation
- How to manage press interest if, and when, it arises

Record-keeping

The case manager will maintain clear records about any case where the allegation or concern meets the criteria above and store them on the individual's confidential personnel file for the duration of the case.

The records of any allegation that, following an investigation, is found to be malicious or false will be deleted from the individual's personnel file (unless the individual consents for the records to be retained on the file).

For all other allegations (which are not found to be malicious or false), the following information will be kept on the file of the individual concerned:

- A clear and comprehensive summary of the allegation
- Details of how the allegation was followed up and resolved
- Notes of any action taken, decisions reached and the outcome
- A declaration on whether the information will be referred to in any future reference

In these cases, the school will provide a copy to the individual, in agreement with children's social care or the police as appropriate.

We will retain all records at least until the accused individual has reached normal pension age, or for 10 years from the date of the allegation if that is longer.

References

When providing employer references, we will:

- › Not refer to any allegation that has been found to be false, unfounded, unsubstantiated or malicious, or any repeated allegations which have all been found to be false, unfounded, unsubstantiated or malicious
- › Include substantiated allegations, provided that the information is factual and does not include opinions

Learning lessons

After any cases where the allegations are *substantiated*, the case manager will review the circumstances of the case with the local authority's designated officer to determine whether there are any improvements that we can make to the school's procedures or practice to help prevent similar events in the future.

This will include consideration of (as applicable):

- Issues arising from the decision to suspend the member of staff
- The duration of the suspension
- Whether or not the suspension was justified
- The use of suspension when the individual is subsequently reinstated. We will consider how future investigations of a similar nature could be carried out without suspending the individual

For all other cases, the case manager will consider the facts and determine whether any improvements can be made.

Non-recent allegations

Abuse can be reported, no matter how long ago it happened.

We will report any non-recent allegations made by a child to the LADO in line with our local authority's procedures for dealing with non-recent allegations.

Where an adult makes an allegation to the school that they were abused as a child, we will advise the individual to report the allegation to the police.

Section 2: concerns that do not meet the harm threshold

This section applies to all concerns (including allegations) about members of staff, including supply teachers, volunteers and contractors, which do not meet the harm threshold set out in section 1 above.

Concerns may arise through, for example:

- Suspicion
- Complaint
- Safeguarding concern or allegation from another member of staff
- Disclosure made by a child, parent or other adult within or outside the school
- Pre-employment vetting checks

We recognise the importance of responding to and dealing with any concerns in a timely manner to safeguard the welfare of children.

Definition of low-level concerns

The term 'low-level' concern is any concern – no matter how small – that an adult working in or on behalf of the school may have acted in a way that:

- Is inconsistent with the staff code of conduct, including inappropriate conduct outside of work, **and**
- Does not meet the allegations threshold or is otherwise not considered serious enough to consider a referral to the designated officer at the local authority

Examples of such behaviour could include, but are not limited to:

- Being overly friendly with children
- Having favourites
- Taking photographs of children on their mobile phone
- Engaging with a child on a one-to-one basis in a secluded area or behind a closed door
- Humiliating pupils

Sharing low-level concerns

We recognise the importance of creating a culture of openness, trust and transparency to encourage all staff to confidentially share low-level concerns so that they can be addressed appropriately.

We will create this culture by:

- Ensuring staff are clear about what appropriate behaviour is, and are confident in distinguishing expected and appropriate behaviour from concerning, problematic or inappropriate behaviour, in themselves and others
- Empowering staff to share any low-level concerns as per section 7.7 of this policy
- Empowering staff to self-refer
- Addressing unprofessional behaviour and supporting the individual to correct it at an early stage
- Providing a responsive, sensitive and proportionate handling of such concerns when they are raised
- Helping to identify any weakness in the school's safeguarding system

Responding to low-level concerns

If the concern is raised via a third party, the Headteacher will collect evidence where necessary by speaking:

- Directly to the person who raised the concern, unless it has been raised anonymously
- To the individual involved and any witnesses

The Headteacher will use the information collected to categorise the type of behaviour and determine any further action, in line with the school's staff behaviour policy/code of conduct. The Headteacher will be the ultimate decision-maker in respect of all low-level concerns, though they may wish to collaborate with the DSL.

Record keeping

All low-level concerns will be recorded in writing. In addition to details of the concern raised, records will include the context in which the concern arose, any action taken and the rationale for decisions and action taken.

Records will be:

- Kept confidential, held securely and comply with the DPA 2018 and UK GDPR
- Reviewed so that potential patterns of concerning, problematic or inappropriate behaviour can be identified. Where a pattern of such behaviour is identified, we will decide on a course of action, either through our disciplinary procedures or, where a pattern of behaviour moves from a concern to meeting the harms threshold as described in section 1 of this Appendix, we will refer it to the designated officer at the local authority
- Retained at least until the individual leaves employment at the school

Where a low-level concern relates to a supply teacher or contractor, we will notify the individual's employer, so any potential patterns of inappropriate behaviour can be identified.

References

We will not include low-level concerns in references unless:

- The concern (or group of concerns) has met the threshold for referral to the designated officer at the local authority and is found to be substantiated; and/or
- The concern (or group of concerns) relates to issues which would ordinarily be included in a reference, such as misconduct or poor performance

› **Appendix 4: Specific Safeguarding Issues**
Keeping Children Safe In Education 2023

All staff have an awareness of the following safeguarding issues through regular training and briefings. Staff are aware that these behaviours can make children vulnerable and put them in danger and that often these issues overlap.

Please read and refer to Appendix 2 for additional information and guidance on the below topics:

- Abuse (incl Physical/Emotional/Sexual/Neglect) Annex 1
- Behaviours linked to safeguarding issues
- Bullying including cyberbullying
- Child on child abuse (inc sexual violence and sexual harassment/sexting-sharing of nude/semi-nude images & upskirting)
- Children and the court system
- Children absent from education
- Child missing from home or care
- Child Criminal Exploitation (CCE)
- Child sexual exploitation (CSE)
- County Lines • Domestic abuse
- Drugs
- Fabricated or induced illness
- Faith abuse
- Female genital mutilation (FGM)
- Forced marriage
- Gangs and youth violence
- Gender-based violence/violence against women and girls (VAWG)
- Homelessness
- Mental health
- Online safety
- Private fostering
- Preventing radicalisation
- Prevent Duty and Channel
- Serious violence
- Trafficking

Our schools identify their top five safeguarding concerns which are aligned to context. Online safety, mental health and child on child abuse are a standard feature for all our schools due to the national picture and the need safeguard and support positive outcome.

Top five Safeguarding concerns	Responses are not exhaustive
Online safety	Introduced the safer schools app within our school and family community to trainulate online safety Commissioned Smoothwall to support filtering and monitoring processes Staff training to ensure vigilance and robust response to online safety issues Online safety features throughout our IT curriculum

	<p>IT leader has engaged in online safeguarding training</p> <p>Assemblies and form time activities are used to promote personal safeguarding and ensure are children are aware of CEOP and other organisations to support safety and wellbeing</p>
<p>Mental health</p>	<p>Our five tier mental health provision provides an appropriate response to mental health issues and is transparent for all our community to understand</p> <p>Mental health senior leader appointed and trained</p> <p>Highly skilled pastoral team are equipped to respond and support children and young people with mental health challenges</p> <p>Safeguarding helpline numbers are promoted to ensure our children and young people know how to access support outside school hours</p> <p>A number of professional partners support our five tier strategy.</p> <p>Mental health is normalised in our school where we teach our children and communities that good management of mental health challenges eliminates life long issues and can shape our future not define it. Resilience is an essential component of developing mentally healthy children</p>
<p>Child on Child abuse</p>	<p>All staff, students and families are clear that child on child abuse is not tolerated and will never be accepted within our school community</p> <p>Clear systems and processes have been implemented to effectively respond to child on child abuse and harmful sexual behaviour incidents.</p> <p>Multiple levels of training is delivered to all staff</p> <p>Specialist training has been delivered to pastoral teams</p> <p>Brook traffic light training is accessed by safeguarding team members</p> <p>The PSHCE curriculum addresses harmful sexual behaviours, consent and key components of healthy and unhealthy relationships.</p>

Children who are absent from education

A child being absent from education, particularly repeatedly, can be a warning sign of a range of safeguarding issues. This might include abuse or neglect, such as sexual abuse or exploitation or child criminal exploitation, or issues such as mental health problems, substance abuse, radicalisation, FGM or forced marriage.

There are many circumstances where a child may be absent or become missing from education, but some children are particularly at risk. These include children who:

- Are at risk of harm or neglect
- Are at risk of forced marriage or FGM
- Come from Gypsy, Roma, or Traveller families
- Come from the families of service personnel
- Go missing or run away from home or care
- Are supervised by the youth justice system
- Cease to attend a school
- Come from new migrant families

We will follow our procedures for unauthorised absence and for dealing with children who are absent from education, particularly on repeat occasions, to help identify the risk of abuse and neglect, including sexual exploitation, and to help prevent the risks of going missing in future. This includes informing the local authority if a child leaves the school without a new school being named, and adhering to requirements with respect to sharing information with the local authority, when applicable, when removing a child's name from the admission register at non-standard transition points.

Staff will be trained in signs to look out for and the individual triggers to be aware of when considering the risks of potential safeguarding concerns which may be related to being absent, such as travelling to conflict zones, FGM and forced marriage.

If a staff member suspects that a child is suffering from harm or neglect, we will follow local child protection procedures, including with respect to making reasonable enquiries. We will make an immediate referral to the local authority children's social care team, and the police, if the child is suffering or likely to suffer from harm, or in immediate danger.

Child criminal exploitation

Child criminal exploitation (CCE) is a form of abuse where an individual or group takes advantage of an imbalance of power to coerce, control, manipulate or deceive a child into criminal activity, in exchange for something the victim needs or wants, and/or for the financial or other advantage of the perpetrator or facilitator, and/or through violence or the threat of violence.

The abuse can be perpetrated by males or females, and children or adults. It can be a one-off occurrence or a series of incidents over time, and range from opportunistic to complex organised abuse.

The victim can be exploited even when the activity appears to be consensual. It does not always involve physical contact and can happen online. For example, young people may be forced to work in cannabis factories, coerced into moving drugs or money across the country (county lines), forced to shoplift or pickpocket, or to threaten other young people.

Indicators of CCE can include a child:

- Appearing with unexplained gifts or new possessions
- Associating with other young people involved in exploitation
- Suffering from changes in emotional wellbeing
- Misusing drugs and alcohol
- Going missing for periods of time or regularly coming home late
- Regularly missing school or education
- Not taking part in education

If a member of staff suspects CCE, they will discuss this with the DSL. The DSL will trigger the local safeguarding procedures, including a referral to the local authority's children's social care team and the police, if appropriate.

Child sexual exploitation

Child sexual exploitation (CSE) is a form of child sexual abuse where an individual or group takes advantage of an imbalance of power to coerce, manipulate or deceive a child into sexual activity, in exchange for something the victim needs or wants and/or for the financial advantage or increased status of the perpetrator or facilitator. It may, or may not, be accompanied by violence or threats of violence.

The abuse can be perpetrated by males or females, and children or adults. It can be a one-off occurrence or a series of incidents over time, and range from opportunistic to complex organised abuse.

The victim can be exploited even when the activity appears to be consensual. Children or young people who are being sexually exploited may not understand that they are being abused. They often trust their abuser and may be tricked into believing they are in a loving, consensual relationship.

CSE can include both physical contact (penetrative and non-penetrative acts) and non-contact sexual activity. It can also happen online. For example, young people may be persuaded or forced to share sexually explicit images of themselves, have sexual conversations by text, or take part in sexual activities using a webcam. CSE may also occur without the victim's immediate knowledge, for example through others copying videos or images.

In addition to the CCE indicators above, indicators of CSE can include a child:

- Having an older boyfriend or girlfriend
- Suffering from sexually transmitted infections or becoming pregnant

If a member of staff suspects CSE, they will discuss this with the DSL. The DSL will trigger the local safeguarding procedures, including a referral to the local authority's children's social care team and the police, if appropriate.

Child-on-child abuse

Child-on-child abuse is when children abuse other children. This type of abuse can take place inside and outside of school. It can also take place both face-to-face and online, and can occur simultaneously between the 2.

Our school has a zero-tolerance approach to sexual violence and sexual harassment. We recognise that even if there are no reports, that doesn't mean that this kind of abuse isn't happening.

Child-on-child abuse is most likely to include, but may not be limited to:

- Bullying (including cyber-bullying, prejudice-based and discriminatory bullying)
- Abuse in intimate personal relationships between children (this is sometimes known as 'teenage relationship abuse')
- Physical abuse such as hitting, kicking, shaking, biting, hair pulling, or otherwise causing physical harm (this may include an online element which facilitates, threatens and/or encourages physical abuse)
- Sexual violence, such as rape, assault by penetration and sexual assault (this may include an online element which facilitates, threatens and/or encourages sexual violence)
- Sexual harassment, such as sexual comments, remarks, jokes and online sexual harassment, which may be standalone or part of a broader pattern of abuse
- Causing someone to engage in sexual activity without consent, such as forcing someone to strip, touch themselves sexually, or to engage in sexual activity with a third party
- Consensual and non-consensual sharing of nude and semi-nude images and/or videos (also known as sexting or youth produced sexual imagery)
- Upskirting, which typically involves taking a picture under a person's clothing without their permission, with the intention of viewing their genitals or buttocks to obtain sexual gratification, or cause the victim humiliation, distress or alarm
- Initiation/hazing type violence and rituals (this could include activities involving harassment, abuse or humiliation used as a way of initiating a person into a group and may also include an online element)

Where children abuse their peers online, this can take the form of, for example, abusive, harassing, and misogynistic messages; the non-consensual sharing of indecent images, especially around chat groups; and the sharing of abusive images and pornography, to those who don't want to receive such content.

If staff have any concerns about child-on-child abuse, or a child makes a report to them, they will follow the procedures set out in section 7 of this policy, as appropriate. In particular, section 7.8 and 7.9 set out more detail about our school's approach to this type of abuse.

When considering instances of harmful sexual behaviour between children, we will consider their ages and stages of development. We recognise that children displaying harmful sexual behaviour have often experienced their own abuse and trauma, and will offer them appropriate support.

Domestic abuse

Children can witness and be adversely affected by domestic abuse and/or violence at home where it occurs between family members. In some cases, a child may blame themselves for the abuse or may have had to leave the family home as a result.

Types of domestic abuse include intimate partner violence, abuse by family members, teenage relationship abuse (abuse in intimate personal relationships between children) and child/adolescent to parent violence and abuse. It can be physical, sexual, financial, psychological or emotional. It can also include ill treatment that isn't physical, as well as witnessing the ill treatment of others – for example, the impact of all forms of domestic abuse on children.

Anyone can be a victim of domestic abuse, regardless of gender, age, ethnicity, socioeconomic status, sexuality or background, and domestic abuse can take place inside or outside of the home. Children who witness domestic abuse are also victims.

Older children may also experience and/or be the perpetrators of domestic abuse and/or violence in their own personal relationships. This can include sexual harassment.

Exposure to domestic abuse and/or violence can have a serious, long-lasting emotional and psychological impact on children and affect their health, wellbeing, development and ability to learn. If police are called to an incident of domestic abuse and any children in the household have experienced the incident, the police will inform the key adult in school (usually the designated safeguarding lead) before the child or children arrive at school the following day. This is the procedure where police forces are part of Operation Encompass

The DSL will provide support according to the child's needs and update records about their circumstances.

Homelessness

Being homeless or being at risk of becoming homeless presents a real risk to a child's welfare. The DSL [and deputy/deputies] will be aware of contact details and referral routes in to the local housing authority so they can raise/progress concerns at the earliest opportunity (where appropriate and in accordance with local procedures).

Where a child has been harmed or is at risk of harm, the DSL will also make a referral to children's social care.

So-called 'honour-based' abuse (including FGM and forced marriage)

So-called 'honour-based' abuse (HBA) encompasses incidents or crimes committed to protect or defend the honour of the family and/or community, including FGM, forced marriage, and practices such as breast ironing.

Abuse committed in this context often involves a wider network of family or community pressure and can include multiple perpetrators.

All forms of HBA are abuse and will be handled and escalated as such. All staff will be alert to the possibility of a child being at risk of HBA or already having suffered it. If staff have a concern, they will speak to the DSL, who will activate local safeguarding procedures.

FGM

The DSL will make sure that staff have access to appropriate training to equip them to be alert to children affected by FGM or at risk of FGM.

Section 7.3 of this policy sets out the procedures to be followed if a staff member discovers that an act of FGM appears to have been carried out or suspects that a pupil is at risk of FGM.

Indicators that FGM has already occurred include:

- A pupil confiding in a professional that FGM has taken place
- A mother/family member disclosing that FGM has been carried out
- A family/pupil already being known to social services in relation to other safeguarding issues
- A girl:
 - Having difficulty walking, sitting or standing, or looking uncomfortable
 - Finding it hard to sit still for long periods of time (where this was not a problem previously)
 - Spending longer than normal in the bathroom or toilet due to difficulties urinating
 - Having frequent urinary, menstrual or stomach problems
 - Avoiding physical exercise or missing PE
 - Being repeatedly absent from school, or absent for a prolonged period

- Demonstrating increased emotional and psychological needs – for example, withdrawal or depression, or significant change in behaviour
- Being reluctant to undergo any medical examinations
- Asking for help, but not being explicit about the problem
- Talking about pain or discomfort between her legs

Potential signs that a pupil may be at risk of FGM include:

- The girl's family having a history of practising FGM (this is the biggest risk factor to consider)
- FGM being known to be practised in the girl's community or country of origin
- A parent or family member expressing concern that FGM may be carried out
- A family not engaging with professionals (health, education or other) or already being known to social care in relation to other safeguarding issues
- A girl:
 - Having a mother, older sibling or cousin who has undergone FGM
 - Having limited level of integration within UK society
 - Confiding to a professional that she is to have a "special procedure" or to attend a special occasion to "become a woman"
 - Talking about a long holiday to her country of origin or another country where the practice is prevalent, or parents/carers stating that they or a relative will take the girl out of the country for a prolonged period
 - Requesting help from a teacher or another adult because she is aware or suspects that she is at immediate risk of FGM
 - Talking about FGM in conversation – for example, a girl may tell other children about it (although it is important to take into account the context of the discussion)
 - Being unexpectedly absent from school
 - Having sections missing from her 'red book' (child health record) and/or attending a travel clinic or equivalent for vaccinations/anti-malarial medication

The above indicators and risk factors are not intended to be exhaustive.

Forced marriage

Forcing a person into marriage is a crime. A forced marriage is one entered into without the full and free consent of 1 or both parties and where violence, threats, or any other form of coercion is used to cause a person to enter into a marriage. Threats can be physical or emotional and psychological. It is also illegal to cause a child under the age of 18 to marry, even if violence, threats or coercion are not involved.

Staff will receive training around forced marriage and the presenting symptoms. We are aware of the '1 chance' rule, i.e. we may only have 1 chance to speak to the potential victim and only 1 chance to save them.

If a member of staff suspects that a pupil is being forced into marriage, they will speak to the pupil about their concerns in a secure and private place. They will then report this to the DSL.

The DSL will:

- › Speak to the pupil about the concerns in a secure and private place
- › Activate the local safeguarding procedures and refer the case to the local authority's designated officer
- › Seek advice from the Forced Marriage Unit on 020 7008 0151 or fmu@fco.gov.uk
- › Refer the pupil to an education welfare officer, pastoral tutor, learning mentor, or school counsellor, as appropriate

Preventing radicalisation

- **Radicalisation** refers to the process by which a person comes to support terrorism and extremist ideologies associated with terrorist groups
- **Extremism** is vocal or active opposition to fundamental British values, such as democracy, the rule of law, individual liberty, and mutual respect and tolerance of different faiths and beliefs. This also includes calling for the death of members of the armed forces
- **Terrorism** is an action that:
 - Endangers or causes serious violence to a person/people;
 - Causes serious damage to property; or
 - Seriously interferes or disrupts an electronic system

The use or threat of terrorism must be designed to influence the government or to intimidate the public and is made for the purpose of advancing a political, religious or ideological cause.

Schools have a duty to prevent children from being drawn into terrorism. The DSL will undertake Prevent awareness training and make sure that staff have access to appropriate training to equip them to identify children at risk.

We will assess the risk of children in our school being drawn into terrorism. This assessment will be based on an understanding of the potential risk in our local area, in collaboration with our local safeguarding partners and local police force.

We will ensure that suitable internet filtering is in place, and equip our pupils to stay safe online at school and at home.

There is no single way of identifying an individual who is likely to be susceptible to an extremist ideology. Radicalisation can occur quickly or over a long period.

Staff will be alert to changes in pupils' behaviour.

The government website [Educate Against Hate](#) and charity [NSPCC](#) say that signs that a pupil is being radicalised can include:

- Refusal to engage with, or becoming abusive to, peers who are different from themselves
- Becoming susceptible to conspiracy theories and feelings of persecution
- Changes in friendship groups and appearance
- Rejecting activities they used to enjoy
- Converting to a new religion
- Isolating themselves from family and friends
- Talking as if from a scripted speech
- An unwillingness or inability to discuss their views
- A sudden disrespectful attitude towards others
- Increased levels of anger
- Increased secretiveness, especially around internet use
- Expressions of sympathy for extremist ideologies and groups, or justification of their actions
- Accessing extremist material online, including on Facebook or Twitter
- Possessing extremist literature
- Being in contact with extremist recruiters and joining, or seeking to join, extremist organisations

Children who are at risk of radicalisation may have low self-esteem, or be victims of bullying or discrimination. It is important to note that these signs can also be part of normal teenage behaviour – staff should have confidence in their instincts and seek advice if something feels wrong.

If staff are concerned about a pupil, they will follow our procedures set out in section 7.5 of this policy, including discussing their concerns with the DSL.

Staff should **always** take action if they are worried.

Further information on the school's measures to prevent radicalisation are set out in other school policies and procedures, including:

behaviour policy
online/e-safety policy
PSHE policy.

Sexual violence and sexual harassment between children in schools

Sexual violence and sexual harassment can occur:

- Between 2 children of any age and sex
- Through a group of children sexually assaulting or sexually harassing a single child or group of children
- Online and face to face (both physically and verbally)

Sexual violence and sexual harassment exist on a continuum and may overlap.

Children who are victims of sexual violence and sexual harassment will likely find the experience stressful and distressing. This will, in all likelihood, adversely affect their educational attainment and will be exacerbated if the alleged perpetrator(s) attends the same school.

If a victim reports an incident, it is essential that staff make sure they are reassured that they are being taken seriously and that they will be supported and kept safe. A victim should never be given the impression that they are creating a problem by reporting any form of abuse or neglect. Nor should a victim ever be made to feel ashamed for making a report.

When supporting victims, staff will:

- Reassure victims that the law on child-on-child abuse is there to protect them, not criminalise them
- Regularly review decisions and actions, and update policies with lessons learnt
- Look out for potential patterns of concerning, problematic or inappropriate behaviour, and decide on a course of action where we identify any patterns
- Consider if there are wider cultural issues within the school that enabled inappropriate behaviour to occur and whether revising policies and/or providing extra staff training could minimise the risk of it happening again
- Remain alert to the possible challenges of detecting signs that a child has experienced sexual violence, and show sensitivity to their needs

Some groups are potentially more at risk. Evidence shows that girls, children with SEN and/or disabilities, and lesbian, gay, bisexual and transgender (LGBT) children are at greater risk.

Staff should be aware of the importance of:

- Challenging inappropriate behaviours

- Making clear that sexual violence and sexual harassment is not acceptable, will never be tolerated and is not an inevitable part of growing up
- Challenging physical behaviours (potentially criminal in nature), such as grabbing bottoms, breasts and genitalia, pulling down trousers, flicking bras and lifting up skirts. Dismissing or tolerating such behaviours risks normalising them

If staff have any concerns about sexual violence or sexual harassment, or a child makes a report to them, they will follow the procedures set out in section 7 of this policy, as appropriate. In particular, section 7.8 and 7.9 set out more detail about our school's approach to this type of abuse.

Serious violence

Indicators which may signal that a child is at risk from, or involved with, serious violent crime may include:

- Increased absence from school
- Change in friendships or relationships with older individuals or groups
- Significant decline in performance
- Signs of self-harm or a significant change in wellbeing
- Signs of assault or unexplained injuries
- Unexplained gifts or new possessions (this could indicate that the child has been approached by, or is involved with, individuals associated with criminal networks or gangs and may be at risk of criminal exploitation (see above))

Risk factors which increase the likelihood of involvement in serious violence include:

- Being male
- Having been frequently absent or permanently excluded from school
- Having experienced child maltreatment
- Having been involved in offending, such as theft or robbery

Staff will be aware of these indicators and risk factors. If a member of staff has a concern about a pupil being involved in, or at risk of, serious violence, they will report this to the DSL.

Checking the identity and suitability of visitors

Adapt this section to reflect procedures in your setting.

All visitors will be required to verify their identity to the satisfaction of staff.

If the visitor is unknown to the setting, we will check their credentials and reason for visiting before allowing them to enter the setting. Visitors should be ready to produce identification.

Visitors are expected to sign the visitors' book and wear a visitor's badge.

Visitors to the school who are visiting for a professional purpose, such as educational psychologists and school improvement officers, will be asked to show photo ID and:

- Will be asked to show their DBS certificate, which will be checked alongside their photo ID; or
- The organisation sending the professional, such as the LA or educational psychology service, will provide prior written confirmation that an appropriate level of DBS check has been carried out (if this is provided, we will not ask to see the DBS certificate)

All other visitors, including visiting speakers, will be accompanied by a member of staff at all times.

We will not invite into the school any speaker who is known to disseminate extremist views, and will carry out appropriate checks to ensure that any individual or organisation using school facilities is not seeking to disseminate extremist views or radicalise pupils or staff.

Missing students

Our procedures are designed to ensure that a missing child is found and returned to effective supervision as soon as possible. If a child goes missing, we will follow our missing children protocol ensuring that parents are informed, incident is logged on CPOMs and police are notified if needed.

Safeguarding Contacts: -

Children's services – 0300 555 0050

Adults services – 0300-555 0055

Out of hours emergency contact – 0300 555 8574 or call 999

National Contacts: -

Police (Non-emergency 101)

CEOP (Child Exploitation and Online Protection) CEOP Safety Centre

Safeguarding Contacts: - Add in helpline numbers and website links

Children's services – 0300 555-0050

Adults services – 0300-555---55

Out of hours emergency contact – 0300 555 8574 or call 999

National Contacts: - Add in other contacts

Police (Non-emergency 101)

CEOP (Child Exploitation and Online Protection) CEOP Safety Centre